



Praktikum

Organisasi Sistem Komputer

Fungsi Komputer dan
Interkoneksinya

Alat Praktikum

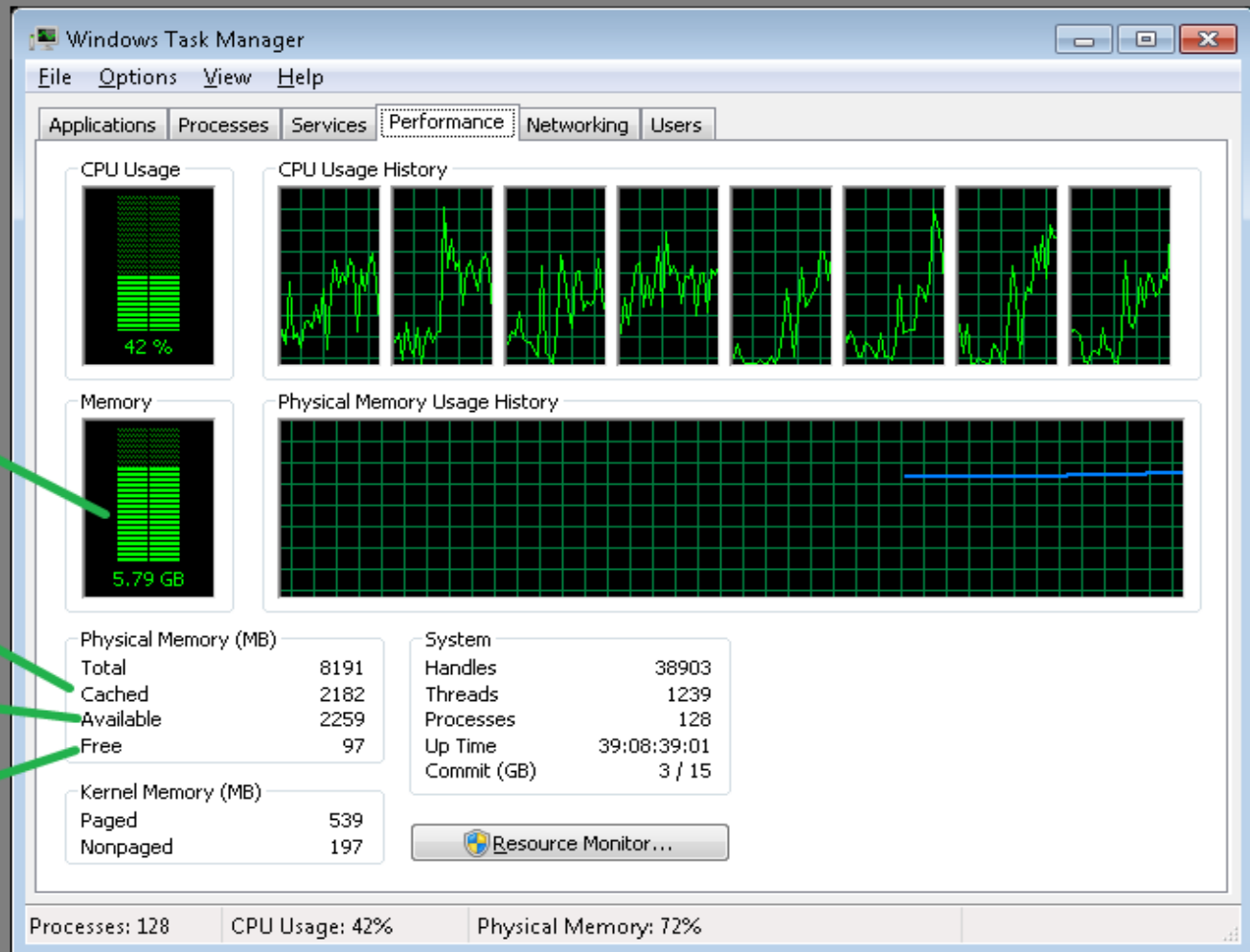
1. PC/Laptop 1 Unit
2. Windows Task Manager
3. Gambar 3.18(b) halaman 89 buku “Computer Organization and Architecture Designing for Performance, Eighth Edition, William Stallings” dan Device Manager
4. PCI-Z
5. Print Out hasil percobaan

Windows Task Manager

Windows Task Manager

1. Jalankan Windows Task Manager dengan menekan tombol ctrl alt delete pada keyboard komputer dan pilihlah Start Task Manager.
2. Layar monitor akan menampilkan :

Windows Task Manager (next...)



Total - Available

Standby + Modified

Free + Zero + Standby

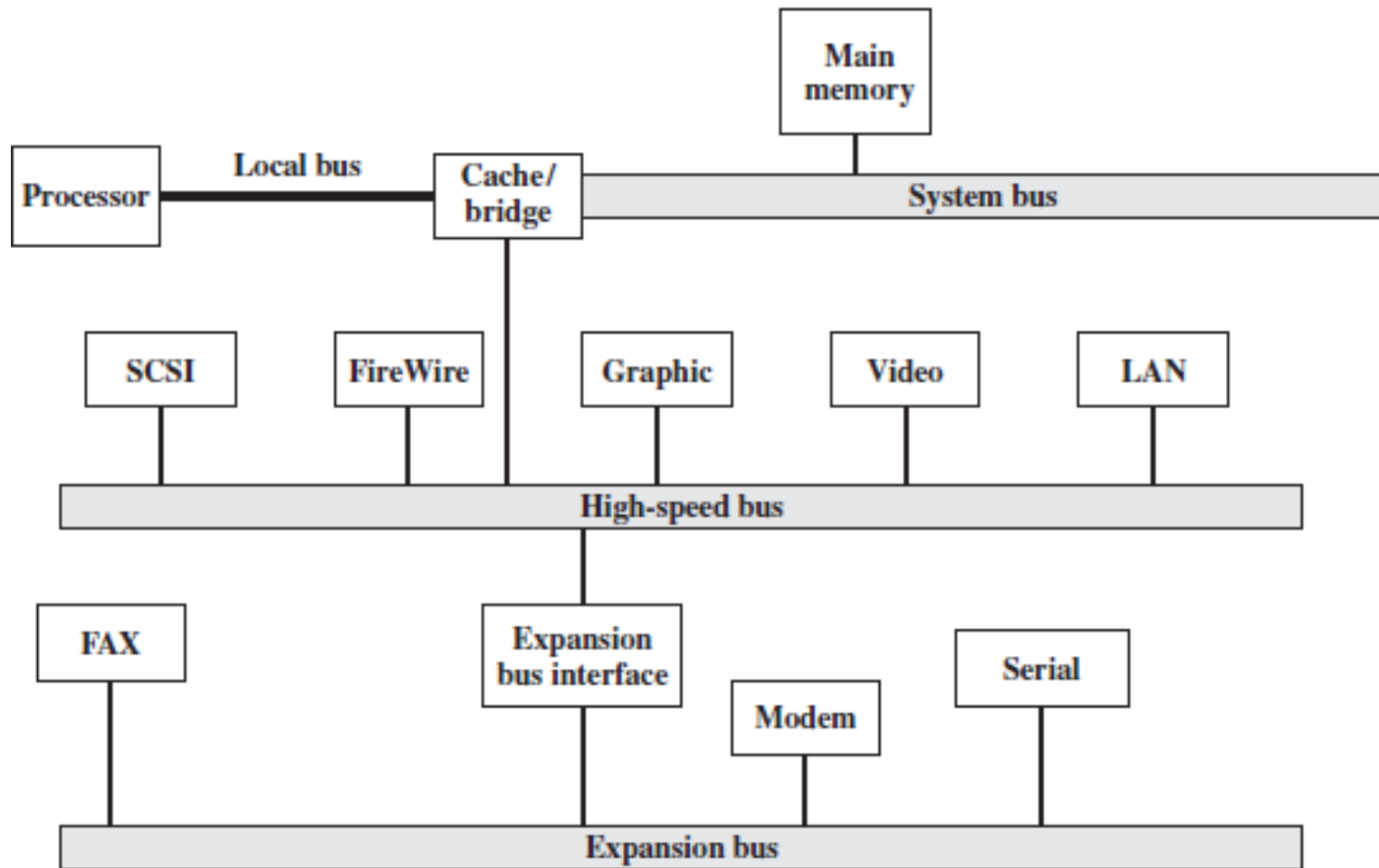
Free + Zero

Windows Task Manager (next...)

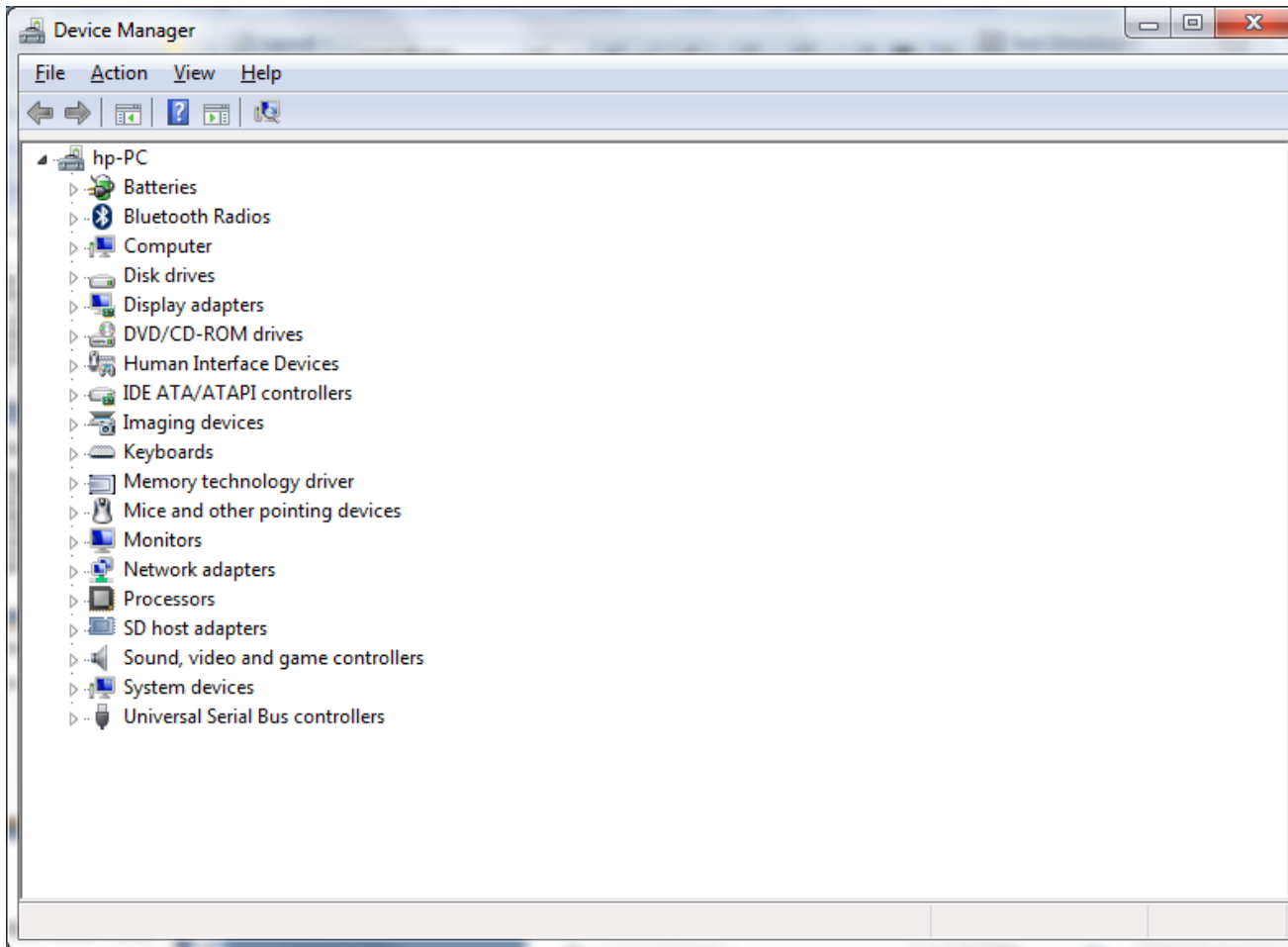
3. Berdasarkan gambar di atas, pilihlah tab Performance.
4. Amati tampilan memory yg menunjukkan satuan GB dan Physical Memory (MB) → Total, Cached, Available, dan Free.
5. Ambil screenshot-nya dari hasil tersebut, dan bahas dalam laporan praktikum.

Gambar 3.18(b) halaman 89
buku “Computer Organization
and Architecture Designing for
Performance, Eighth Edition,
William Stallings” dan Device
Manager

Gambar 3.18(b) halaman 89



Device Manager



Praktikum Gambar 3.18(b) dan Device Manager

1. Tiap mahasiswa mengamati & memahami gambar 3.18(b) halaman 89 dan hardware apa saja yang terdapat di dalam komputernya dengan bantuan device manager.
2. Tulislah dan jelaskan hardware apa saja yang ditampilkan oleh Device Manager dengan membuat skema mirip dengan gambar 3.18(b) disesuaikan dengan kondisi komputer tiap mahasiswa.

PCI-Z

PCI-Z

PCI-Z 1.3 - PCI devices information utility

File Database Report Help

System information
 CPU name: Intel(R) Core(TM)2 Duo CPU T5750 @ 2.00GHz, 2 logical CPUs
 Computer name: LOGINFORMATIKA
 User name: loginfo
 Operating system: Microsoft Windows 7
 Available memory (MB): 2038

Type	Vendor	Device	Subsystem	PCI device
Host bridge	Intel Corporation	Mobile PM965/GM965/GL960 Memory Controller ...		VEN_8086&DEV_2A00&SUBSYS_30CD103C
PCI bridge	Intel Corporation	82801H (ICH8 Family) PCI Express Port 4		VEN_8086&DEV_2845&SUBSYS_30CD103C
USB controller	Intel Corporation	82801H (ICH8 Family) USB UHCI Controller #2		VEN_8086&DEV_2831&SUBSYS_30CD103C
FireWire (IEEE 1394)	Ricoh Co Ltd	R5C832 IEEE 1394 Controller		VEN_1180&DEV_0832&SUBSYS_30CD103C
VGA compatible controller	Intel Corporation	Mobile GM965/GL960 Integrated Graphics Contr...		VEN_8086&DEV_2A02&SUBSYS_30CD103C
System peripheral	Ricoh Co Ltd	R5C592 Memory Stick Bus Host Adapter		VEN_1180&DEV_0592&SUBSYS_30CD103C
PCI bridge	Intel Corporation	82801H (ICH8 Family) PCI Express Port 3		VEN_8086&DEV_2843&SUBSYS_30CD103C
USB controller	Intel Corporation	82801H (ICH8 Family) USB UHCI Controller #4		VEN_8086&DEV_2834&SUBSYS_30CD103C
Audio device	Intel Corporation	82801H (ICH8 Family) HD Audio Controller		VEN_8086&DEV_284B&SUBSYS_30CD103C
System peripheral	Ricoh Co Ltd	xD-Picture Card Controller		VEN_1180&DEV_0852&SUBSYS_30CD103C
Ethernet controller	Marvell Technology Group Ltd.	88E8039 PCI-E Fast Ethernet Controller		VEN_11AB&DEV_4353&SUBSYS_30CD103C
SMBus	Intel Corporation	82801H (ICH8 Family) SMBus Controller		VEN_8086&DEV_283E&SUBSYS_30CD103C
PCI bridge	Intel Corporation	82801H (ICH8 Family) PCI Express Port 2		VEN_8086&DEV_2841&SUBSYS_30CD103C
USB controller	Intel Corporation	82801H (ICH8 Family) USB UHCI Controller #3		VEN_8086&DEV_2832&SUBSYS_30CD103C
Display controller	Intel Corporation	Mobile GM965/GL960 Integrated Graphics Contr...		VEN_8086&DEV_2A03&SUBSYS_30CD103C
USB controller	Intel Corporation	82801H (ICH8 Family) USB2 EHCI Controller #1		VEN_8086&DEV_2836&SUBSYS_30CD103C
Network controller	Intel Corporation	PRO/Wireless 3945ABG [Golan] Network Conne...		VEN_8086&DEV_4222&SUBSYS_135B103C
PCI bridge	Intel Corporation	82801H (ICH8 Family) PCI Express Port 1		VEN_8086&DEV_283F&SUBSYS_30CD103C
IDE interface	Intel Corporation	82801HM/HEM (ICH8M/ICH8M-E) IDE Controller		VEN_8086&DEV_2850&SUBSYS_30CD103C
USB controller	Intel Corporation	82801H (ICH8 Family) USB UHCI Controller #5		VEN_8086&DEV_2835&SUBSYS_30CD103C
USB controller	Intel Corporation	82801H (ICH8 Family) USB2 EHCI Controller #2		VEN_8086&DEV_283A&SUBSYS_30CD103C
USB controller	Intel Corporation	82801H (ICH8 Family) USB UHCI Controller #1		VEN_8086&DEV_2830&SUBSYS_30CD103C
ISA bridge	Intel Corporation	82801HM (ICH8M) LPC Interface Controller		VEN_8086&DEV_2815&SUBSYS_30CD103C
SATA controller	Intel Corporation	82801HM/HEM (ICH8M/ICH8M-E) SATA Controll...		VEN_8086&DEV_2829&SUBSYS_30CD103C
PCI bridge	Intel Corporation	82801 Mobile PCI Bridge		VEN_8086&DEV_2448&SUBSYS_30CD103C
System peripheral	Ricoh Co Ltd	R5C843 MMC Host Controller		VEN_1180&DEV_0843&SUBSYS_30CD103C
SD Host controller	Ricoh Co Ltd	R5C822 SD/SDIO/MMC/MS/MSPro Host Adapter		VEN_1180&DEV_0822&SUBSYS_30CD103C

Database: The PCI ID Repository | Version: 2015.01.28 | <http://pciids.sourceforge.net/> Right click on the list for options.

PCI-Z

(next...)

1. Tiap mahasiswa mengamati & memahami tabel yang ditampilkan software PCI-Z
2. Tulislah dan jelaskan apa saja yang tertera pada tabel yang ditampilkan oleh software PCI-Z disesuaikan dengan kondisi komputer setiap mahasiswa.
3. Membahas nomor 1 dan 2 di laporan praktikum.
4. Selamat mengerjakan laporan praktikum.

Tugas Praktikum

Tugas Praktikum

1. Print out hasil percobaan Windows Task Manager, Gambar 3.18(b) - Device Manager, dan PCI-Z
2. Bahas dalam laporan praktikum

See You Next Time