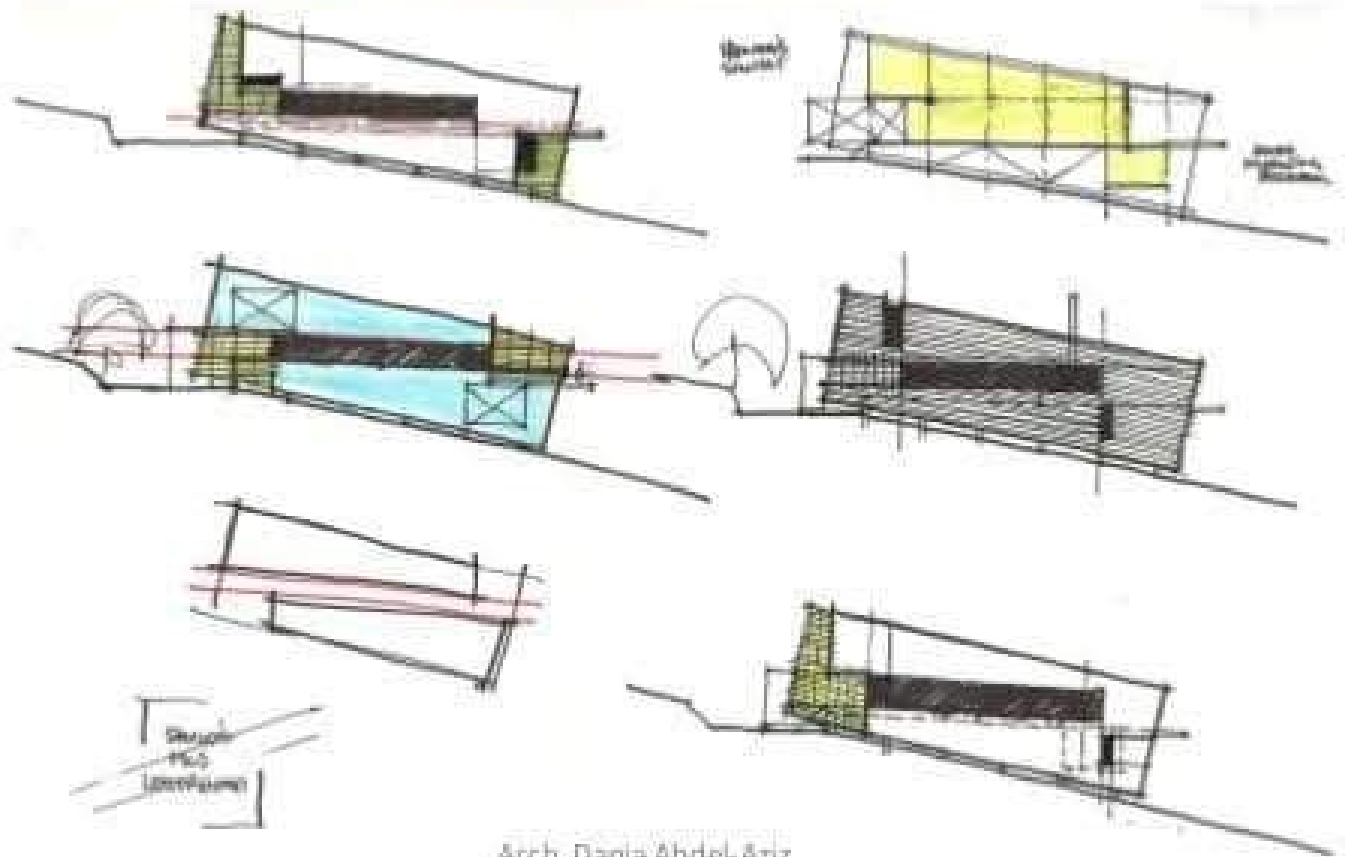


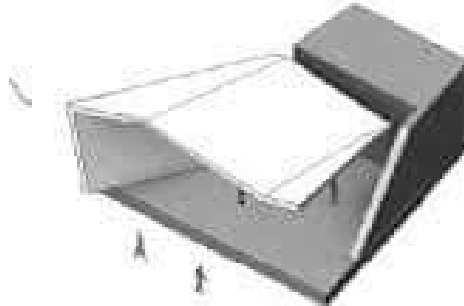
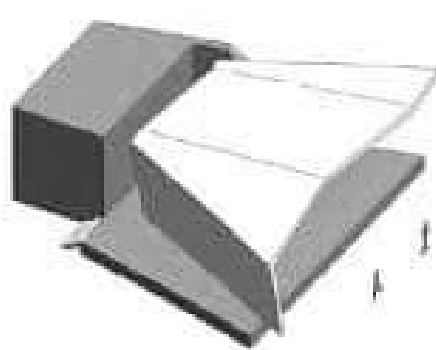
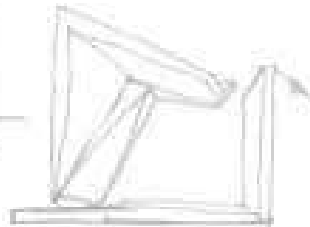
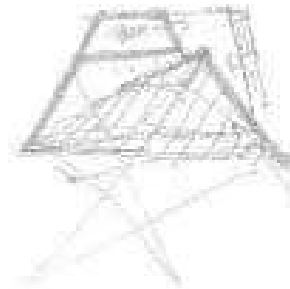
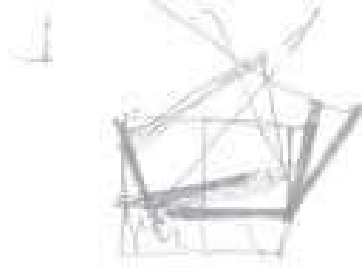
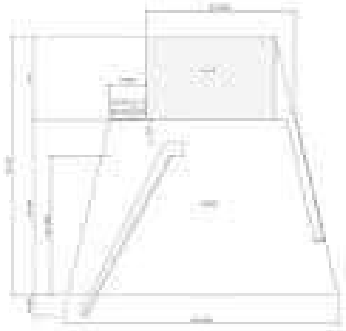
Layout Poster

Komgraf 2020

Purwanto SN



ORIGAMI CONCEPT

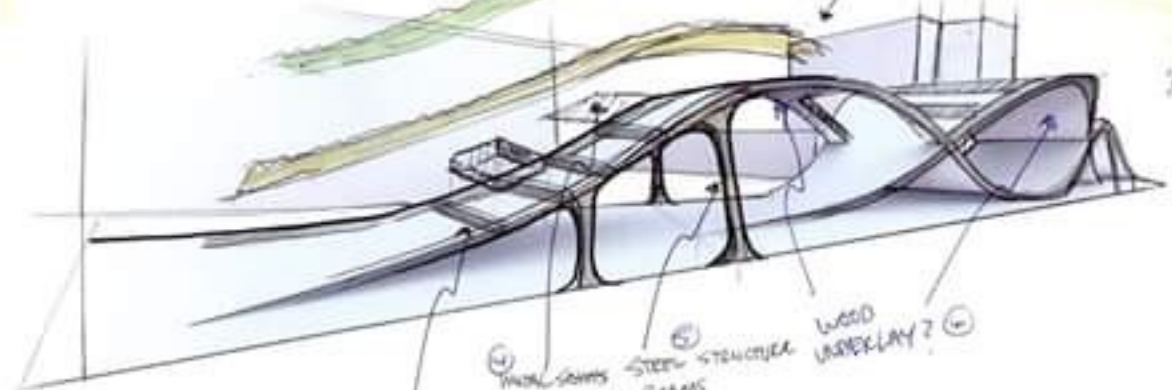
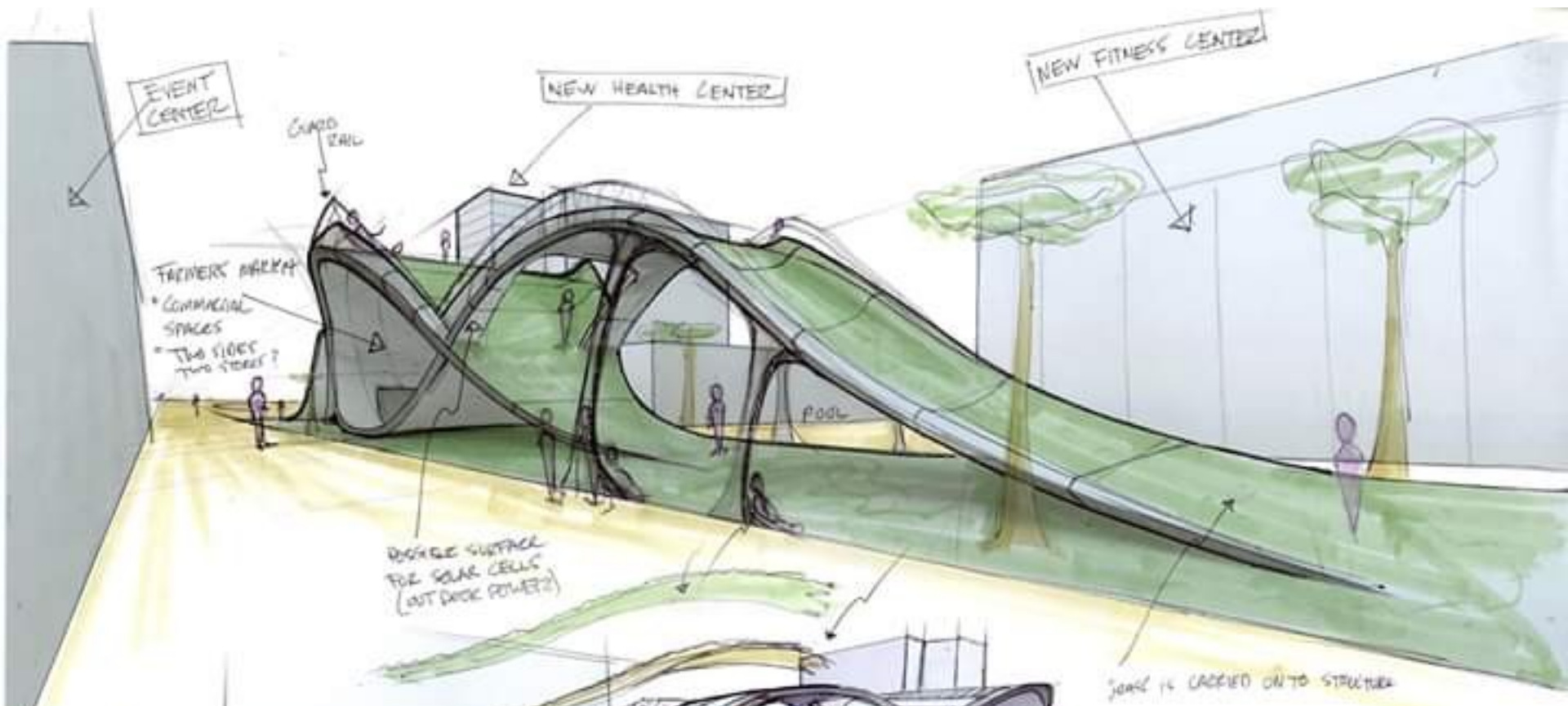


CATHEDRAL CITY HERITAGE COMMONS AMPHITHEATER

CATHEDRAL CITY



DAVID EVANS & ASSOCIATES, INC.
4115 Alamo Street, Suite 100
San Diego, CA 92108
Phone: 619.594.2000
September, 2017



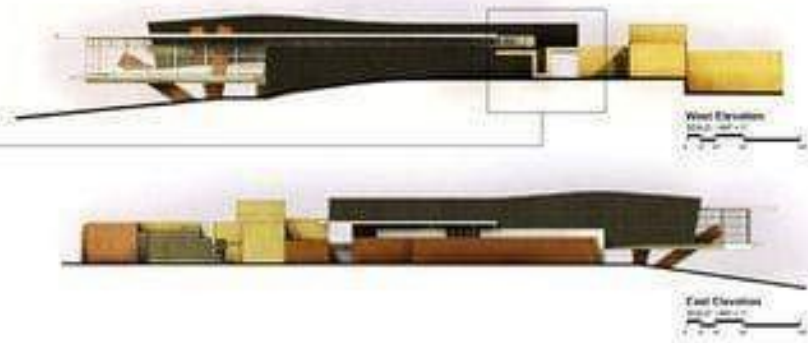
- ③ CANT STEEL LOOPS SETONS
- ④ TRAIL SLOPE FOR SIDE
- ⑤ STEEL STRUCTURE
- ⑥ STEEL BEAMS
- ⑦ WOOD UNDERLAY?
- ⑧



CONNECTION

The new addition to the museum and library respects the delicate balance of historical preservation with new modern design. Looking at the four corners of the historic Charleston Campus, the new addition placement holds the edge as well as completes the expansion started by the existing buildings on campus. The new addition forms a relationship with the naturalism therefore outbuilding the rest of a courtyard between the two buildings. Two elements of historic preservation that played an important role in the development of the design were location and proportion.

ALEXHOGREFE.COM



Interior Circulation



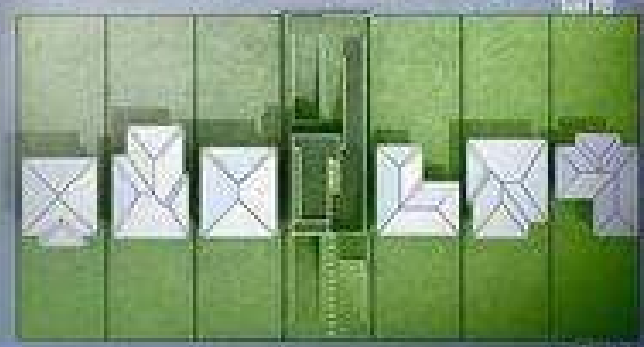
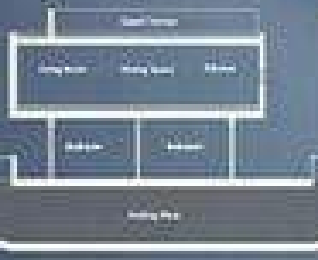
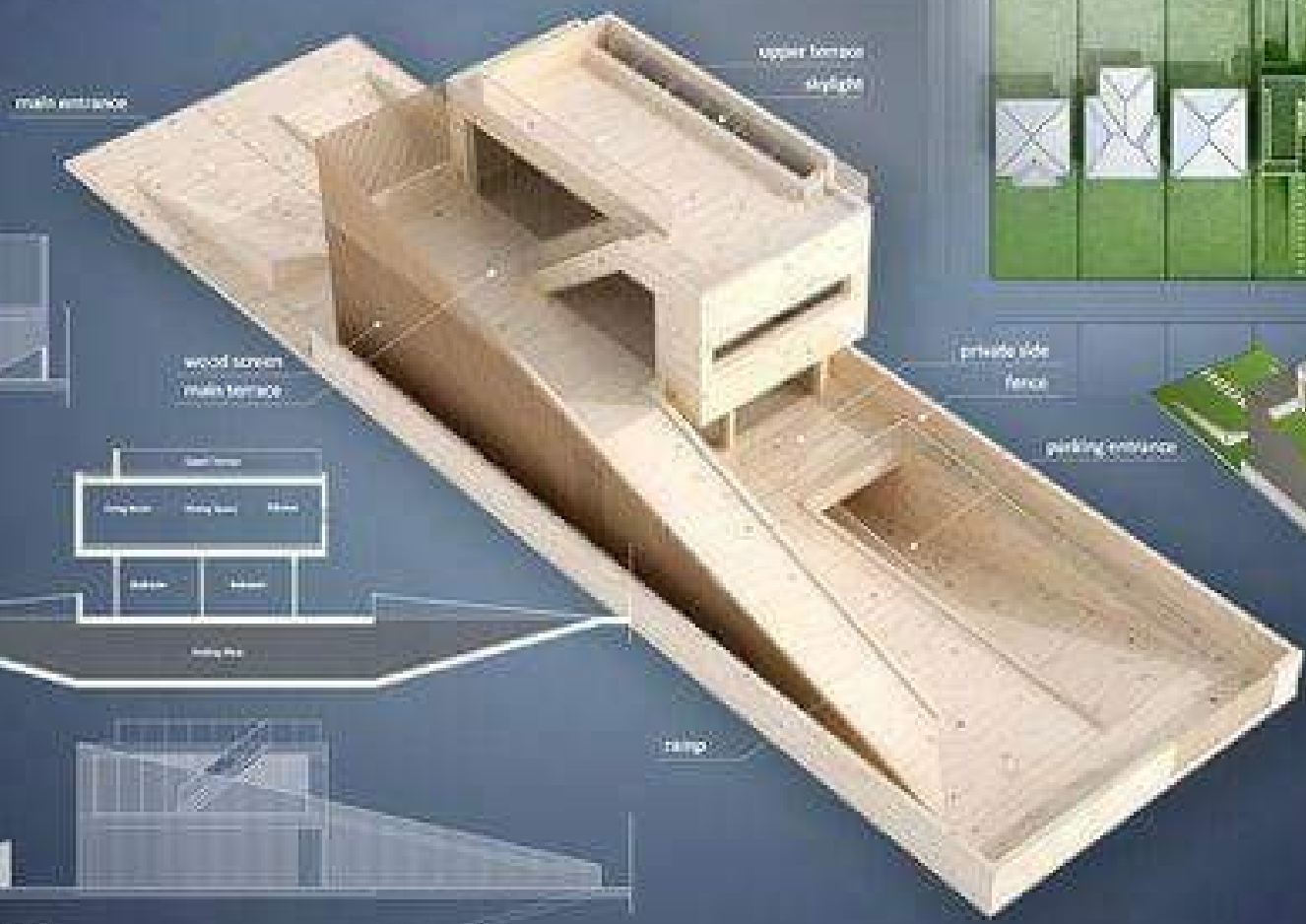
Exhibit Space



Library Entrance



Courtyard Garden



private side fence

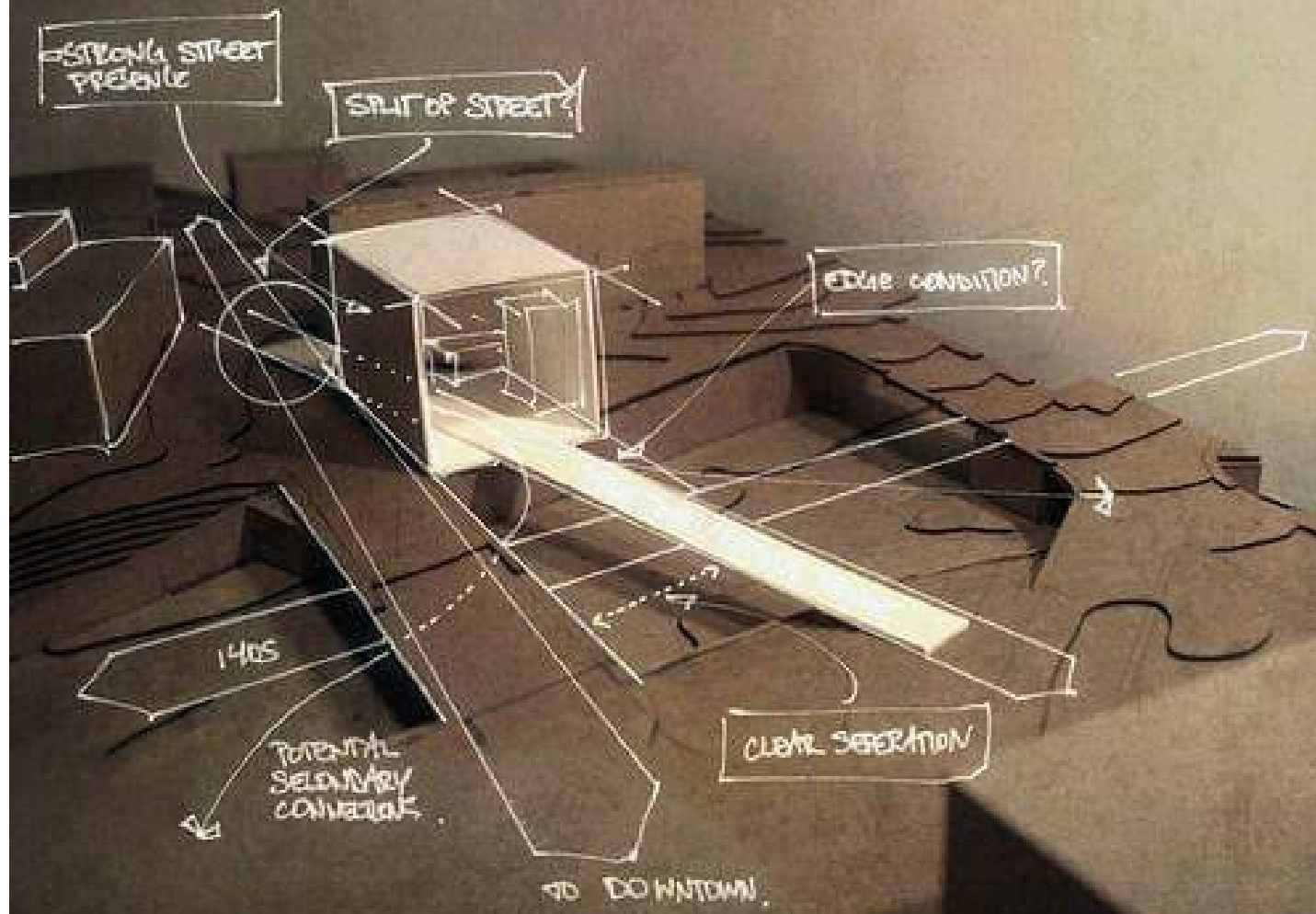
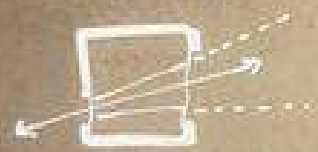


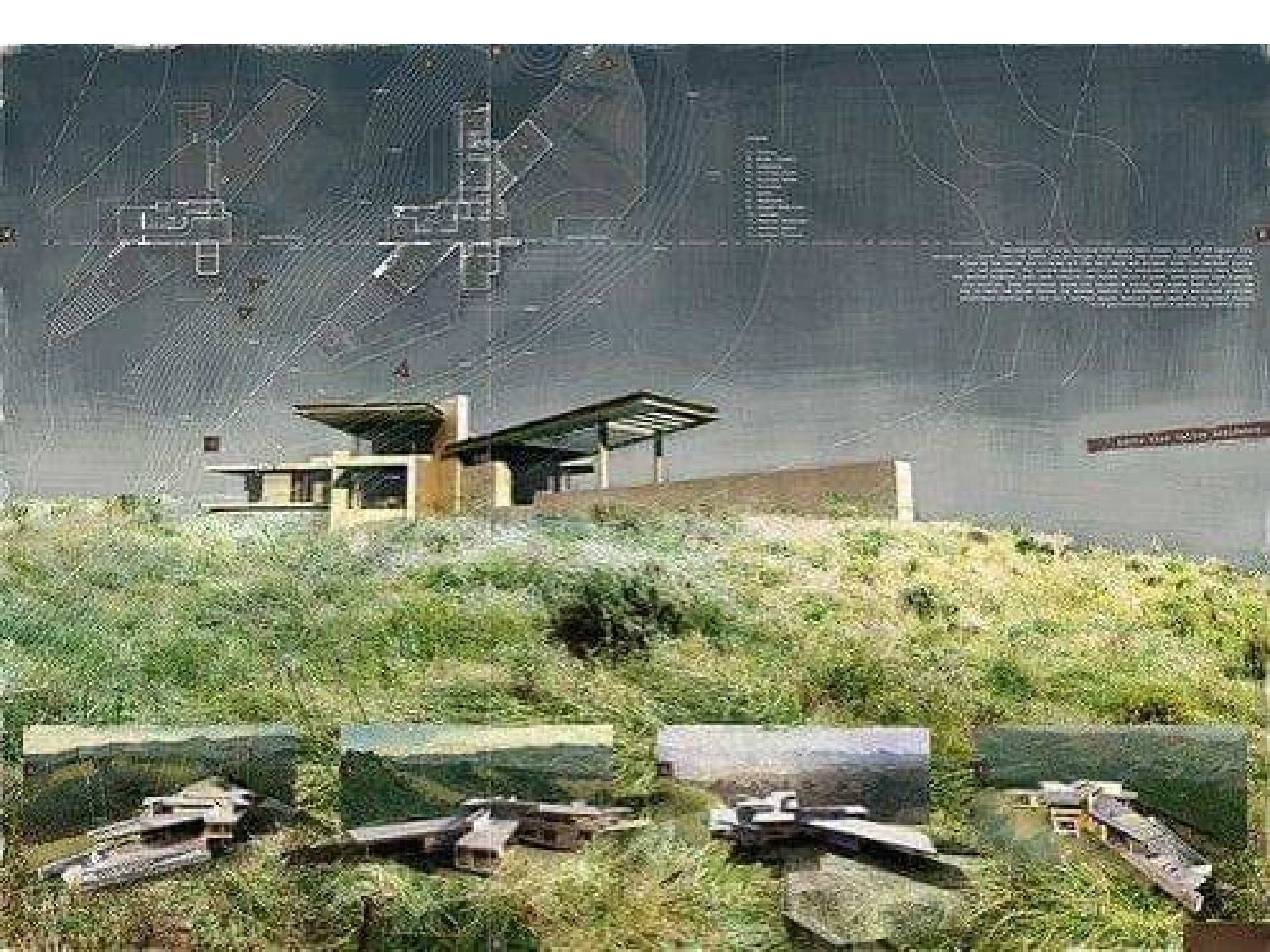
**100%
GREEN
AREA**

4605221150104259049

ARCHITECTURE AS GATEWAY

- THE BUILDING SPANS NEXT TO 1405
- AN INTEGRATED STRUCTURE SPANS 1405
- THE BUILDING FORM IS PERMEABLE FOR THE BRIDGE CONNECTION.



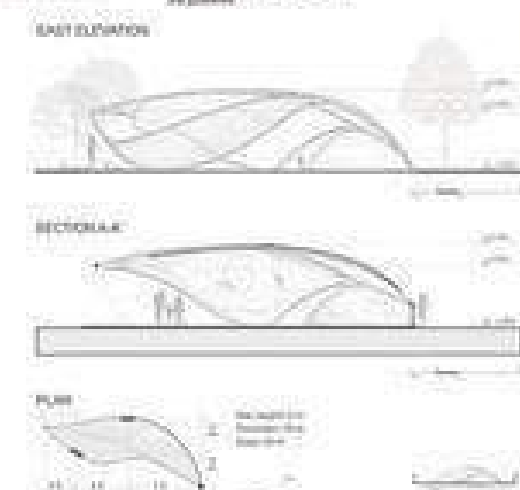




DREAM PAVILION

through Sparkling Wings

WITH TREATMENT AND GENERATIVE PROCESS OF THE PROJECT



Abstract
An architectural idea based on butterfly patterns and wings.
The pavilion is a series of overlapping, curved panels that resemble butterfly wings. The structure is made of a complex, interconnected network of thin, curved panels that create a web-like pattern. The interior is bright and airy, with natural light filtering through the panels. A person is visible in the foreground, sitting on the ground and looking towards the structure.

Site Information
The pavilion was built for a series of events in the park. The pavilion is located in a park-like environment with trees and a bright sky. The pavilion is made of a complex, interconnected network of thin, curved panels that create a web-like pattern. The interior is bright and airy, with natural light filtering through the panels. A person is visible in the foreground, sitting on the ground and looking towards the structure.

Material and Construction
The pavilion is made of a complex, interconnected network of thin, curved panels that create a web-like pattern. The interior is bright and airy, with natural light filtering through the panels. A person is visible in the foreground, sitting on the ground and looking towards the structure.

Construction Details
The pavilion is made of a complex, interconnected network of thin, curved panels that create a web-like pattern. The interior is bright and airy, with natural light filtering through the panels. A person is visible in the foreground, sitting on the ground and looking towards the structure.