

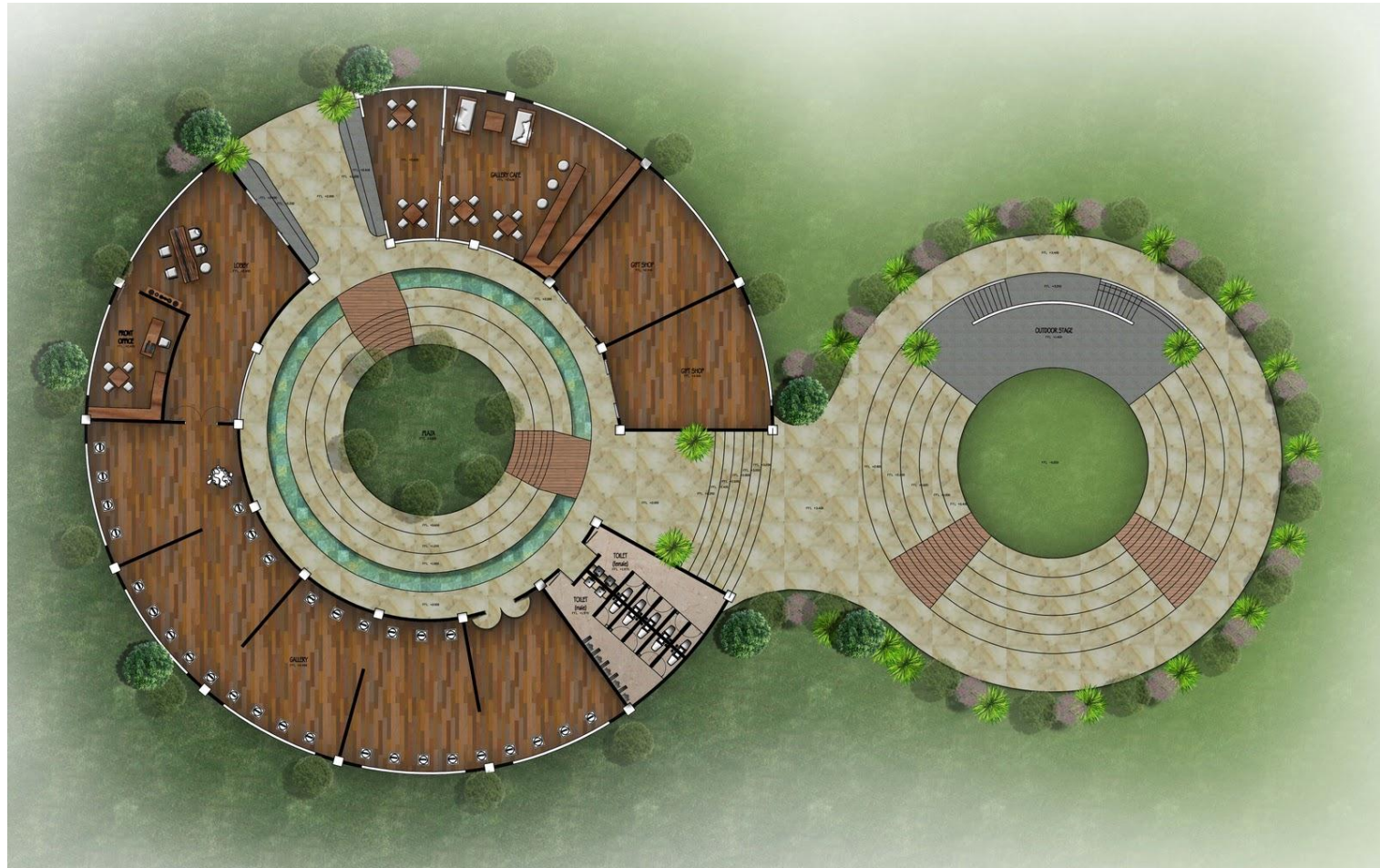
**STUDIO PERANCANGAN ARSITEKTUR 2/4SKS/SEMESTER II**

# **S K E T S A**

**DENAH  
TAMPAK  
POTONGAN  
PERSPEKTIF**

**PROGRAM STUDI ARSITEKTUR FAKULTAS TEKNIK UNS**

# SITE PLAN atau DENAH....??



# DENAH, SITUASI



- PLAN = representation of an object as seen on a horizontal plane, viewed from above (Henry J Cowan, 1998, *Dictionary Of Architectural And Building Technology*, E&FN Spon, London)

# TAMPAK



## ELEVATION

- Representation of an object as seen on a vertical plane, viewed from the front. (Henry J Cowan, 1998, *Dictionary Of Architectural And Building Technology*, E&FN Spon, London)

# POTONGAN



## SECTION ELEVATION

- The vertical distance of a point above or below the benchmark or some other reference point. (Henry J Cowan, 1998, *Dictionary Of Architectural And Building Technology*, E&FN Spon, London)

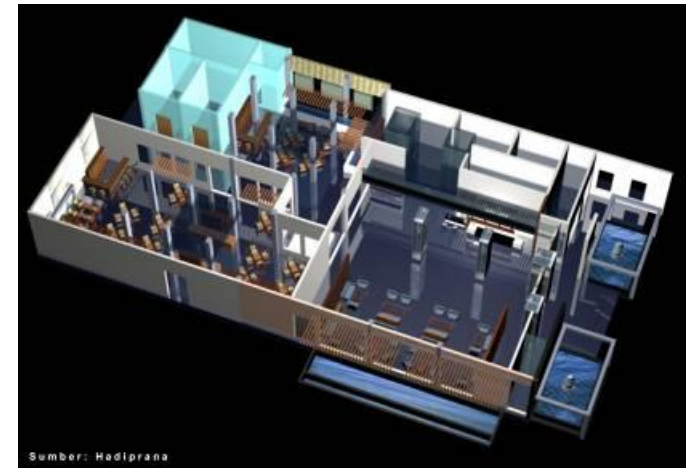
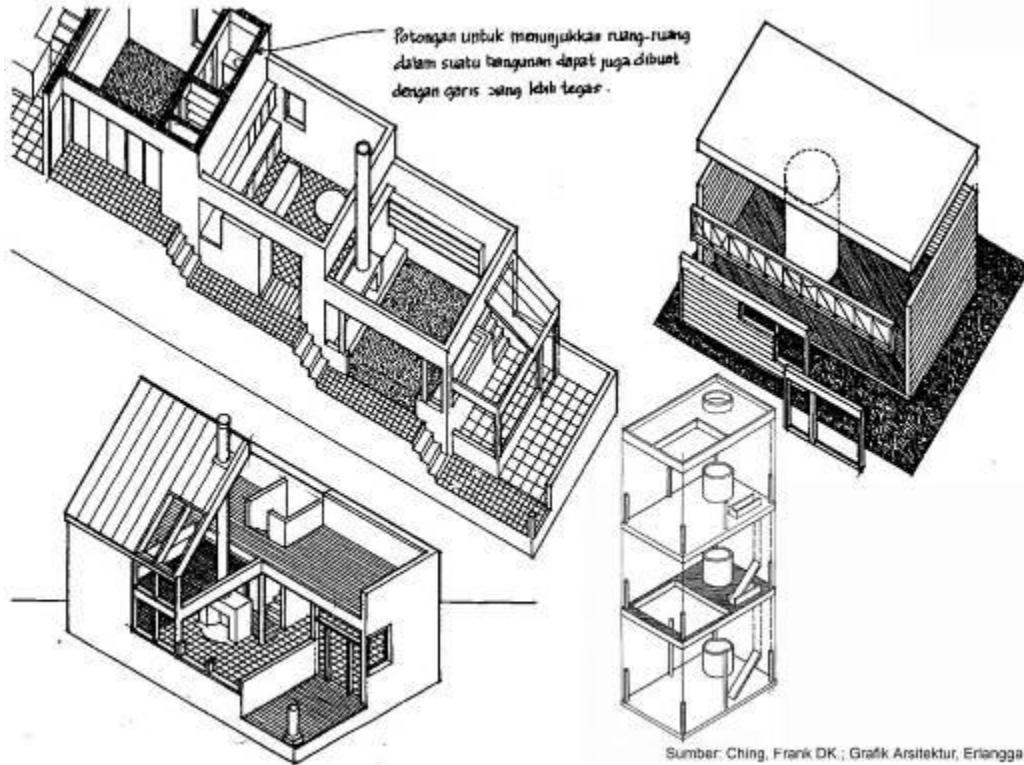
# PERSPEKTIF

## PERSPEKTIF PROJECTION

A pictorial projection in which the object is drawn the way the eyes sees it. Lines that are paralel in plan are drawn to converge on a vanishing point, and lines that are paralel in the elevation and side elevation are also drawn to converge on their vanishing points.



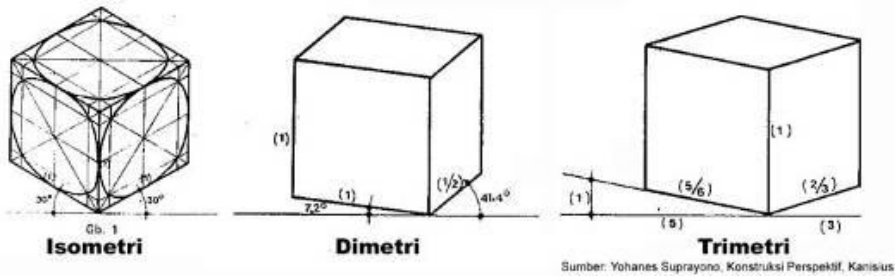
# AKSONOMETRI



## AXONOMETRIC PROJECTION

A pictorial projection that overcomes some of the limitations of the isometric projection, the plan is drawn in true length, projected up from the plan.

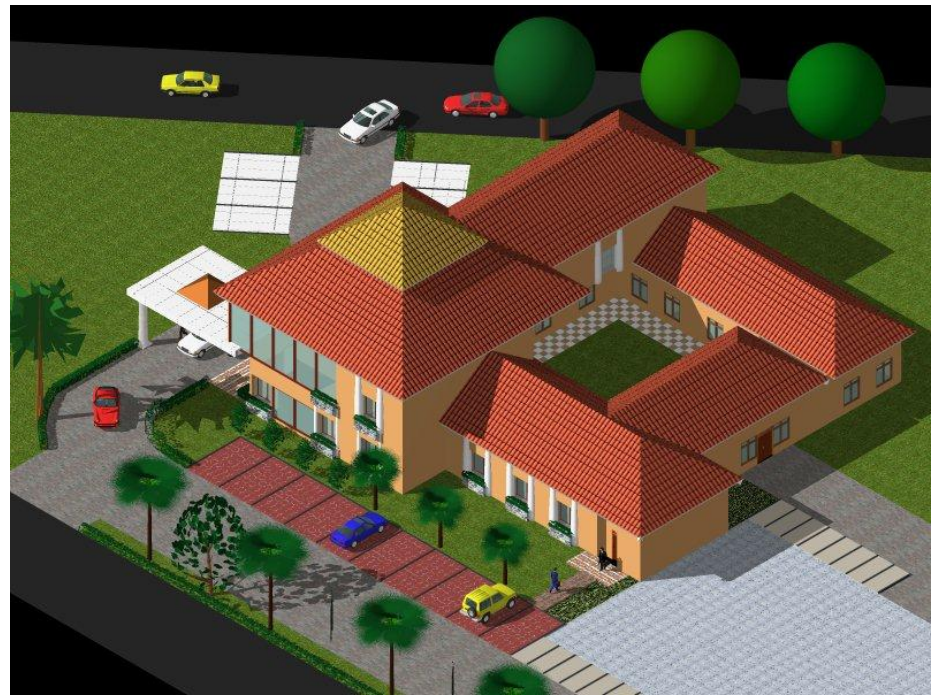
Is sometimes used to describe a projection, similar to isometric, in which the plan axes are inclined at an angle other than  $30^\circ$



# ISOMETRI

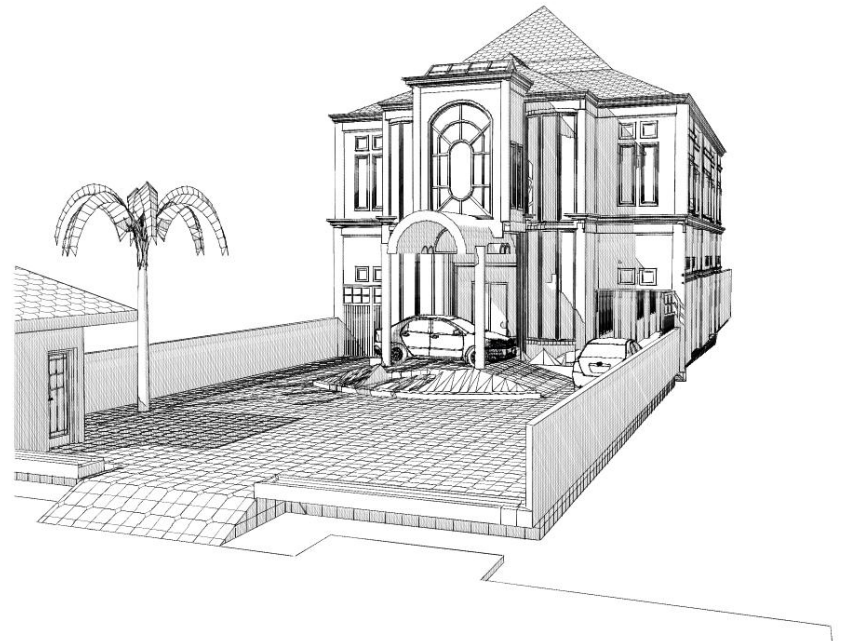
## ISOMETRIC PROJECTION

A pictorial projection in which the elevation, the plan and the side elevation are all drawn at an angle. Vertical lines remain vertical, but all lines that are horizontal in the isometric projection. While the plan, elevation and side elevation are all given equal prominence, the object frequently appears distorted. However, all dimensions on the vertical and on the 30° axes are accurately to scale.

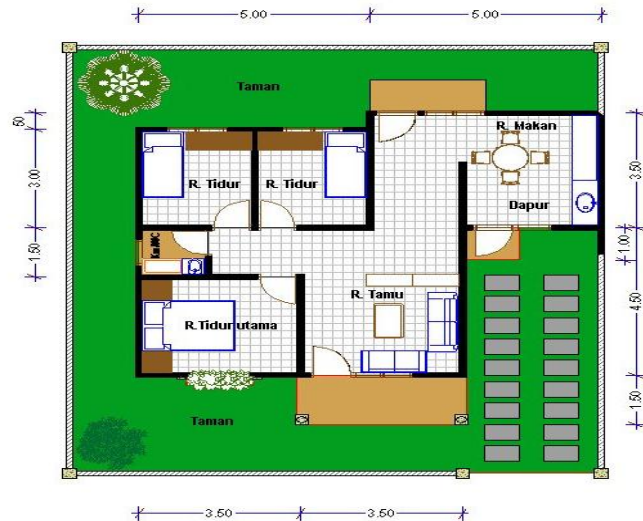




# CONTOH SKETSA



# CONTOH GAMBAR RANCANGAN RUMAH TINGGAL



# CONTOH GAMBAR RANCANGAN BANGUNAN UMUM



# CONTOH INSPIRASI DESAIN

