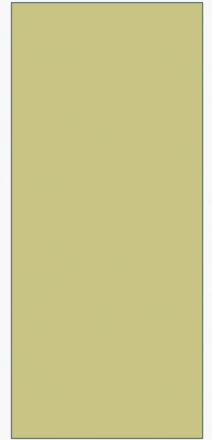


# **GAMBAR TEKNIK KOMUNIKASI ARSITEKTUR II**

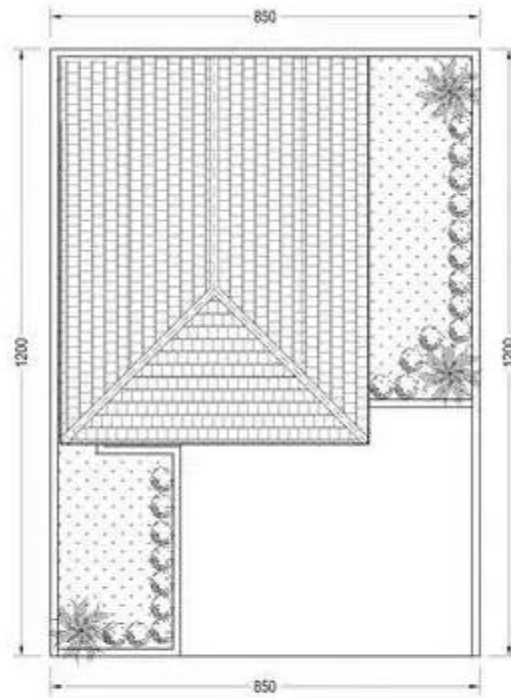
TRI YUNI ISWATI



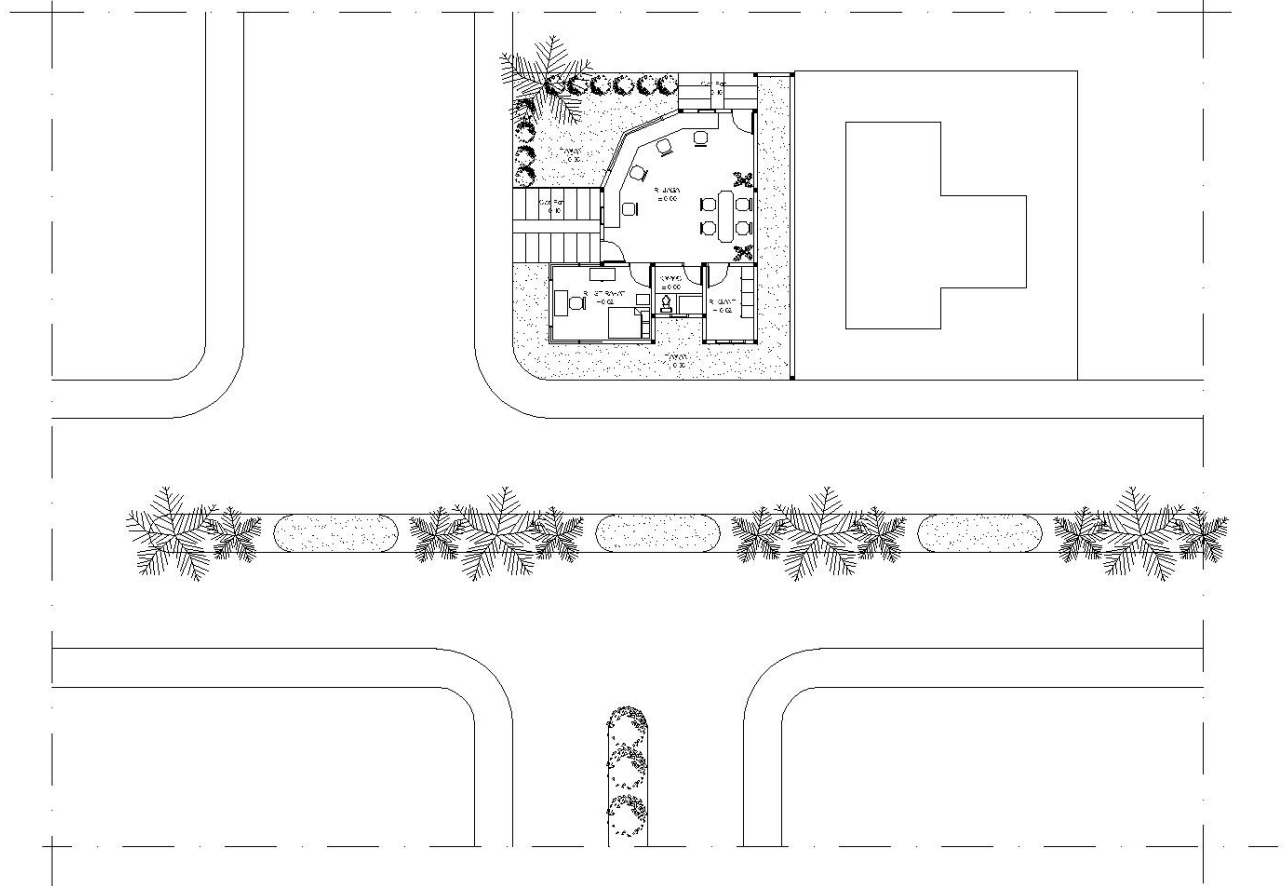
# GAMBAR TEKNIK

- NOTASI
- GAMBAR KERJA
  - Situasi
  - Siteplan
  - Denah
  - Tampak
  - Potongan
  - Detail-detail

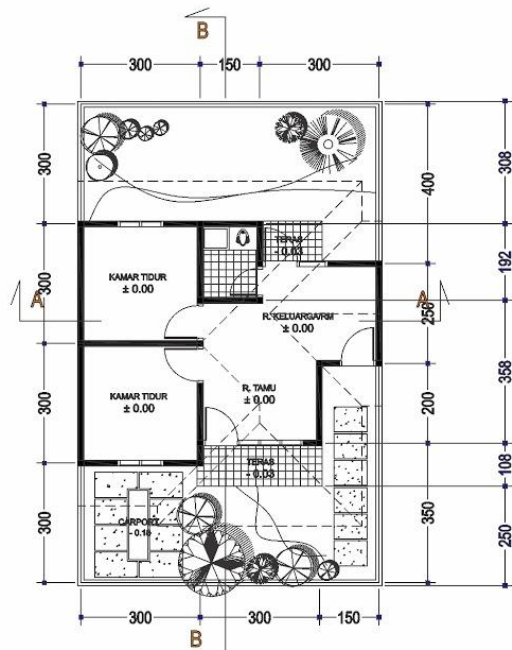
# SITUASI



# SITEPLAN



# DENAH, TAMPAK



DENAH TYPE 36/90  
SKALA 1 : 100

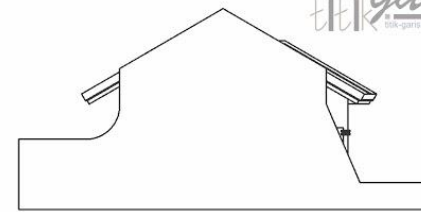
titigaris  
titik-garis.blogspot.com



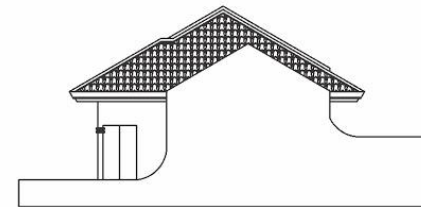
TAMPAK DEPAN  
TYPE 36/90  
SKALA 1 : 100



TAMPAK BELAKANG  
TYPE 36/90  
SKALA 1 : 100



TAMPAK S. KANAN  
TYPE 36/90  
SKALA 1 : 100



TAMPAK S. KIRI  
TYPE 36/90  
SKALA 1 : 100

titigaris  
titik-garis.blogspot.com

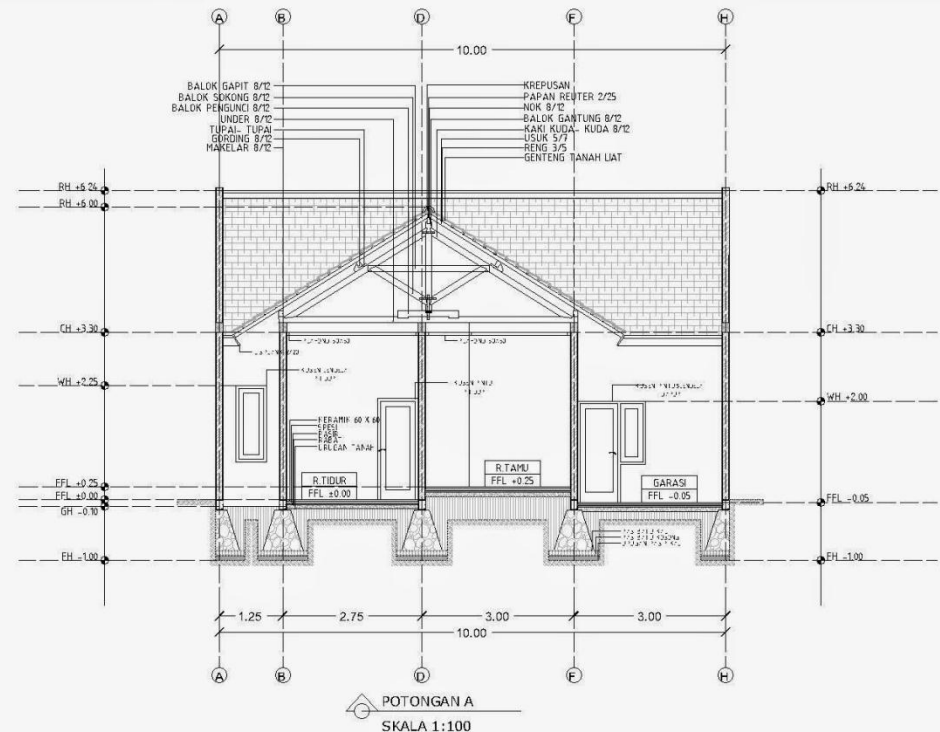
# TAMPAK



TAMPAK DEPAN  
SKALA 1:100



# POTONGAN MEMBUJUR (SESUAI LEBAR BANGUNAN)



## KETERANGAN :

1. SEMUA DIMENSI DALAM SATUAN METER KECUALI DITENTUKAN LAIN
2. SEMUA ELEVASI DALAM SATUAN METER KECUALI DITENTUKAN LAIN

## KETERANGAN :

1. FFL (FINISHING FLOOR LEVEL)
2. GL (GROUND LEVEL)
3. CH (CEILING HIGH)
4. RH (ROOFING HIGH)
5. FH (FOUNDATION HIGH)
6. WH (WINDOWS HIGH)
7. WHH (WALL HIGH)

## KETERANGAN :

- |  |                  |  |                    |
|--|------------------|--|--------------------|
|  | DINDING BATA     |  | PASANGAN BATU KALI |
|  | KOLOM            |  | RABATT             |
|  | DINDING TRASSRAM |  | SPESI              |
|  | URUGAN PASIR     |  | URUGAN TANAH       |



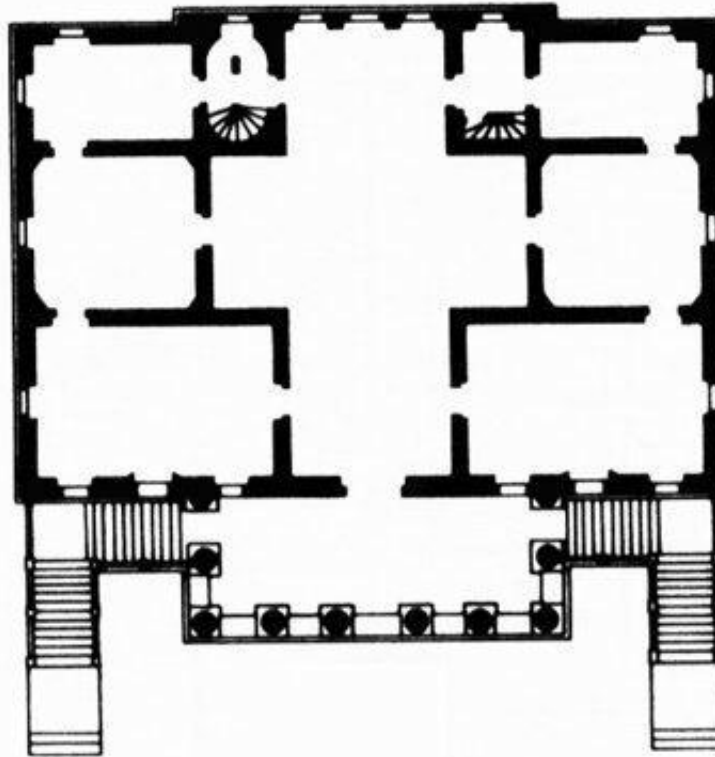
# POTONGAN MELINTANG (MEMANJANG BANGUNAN)

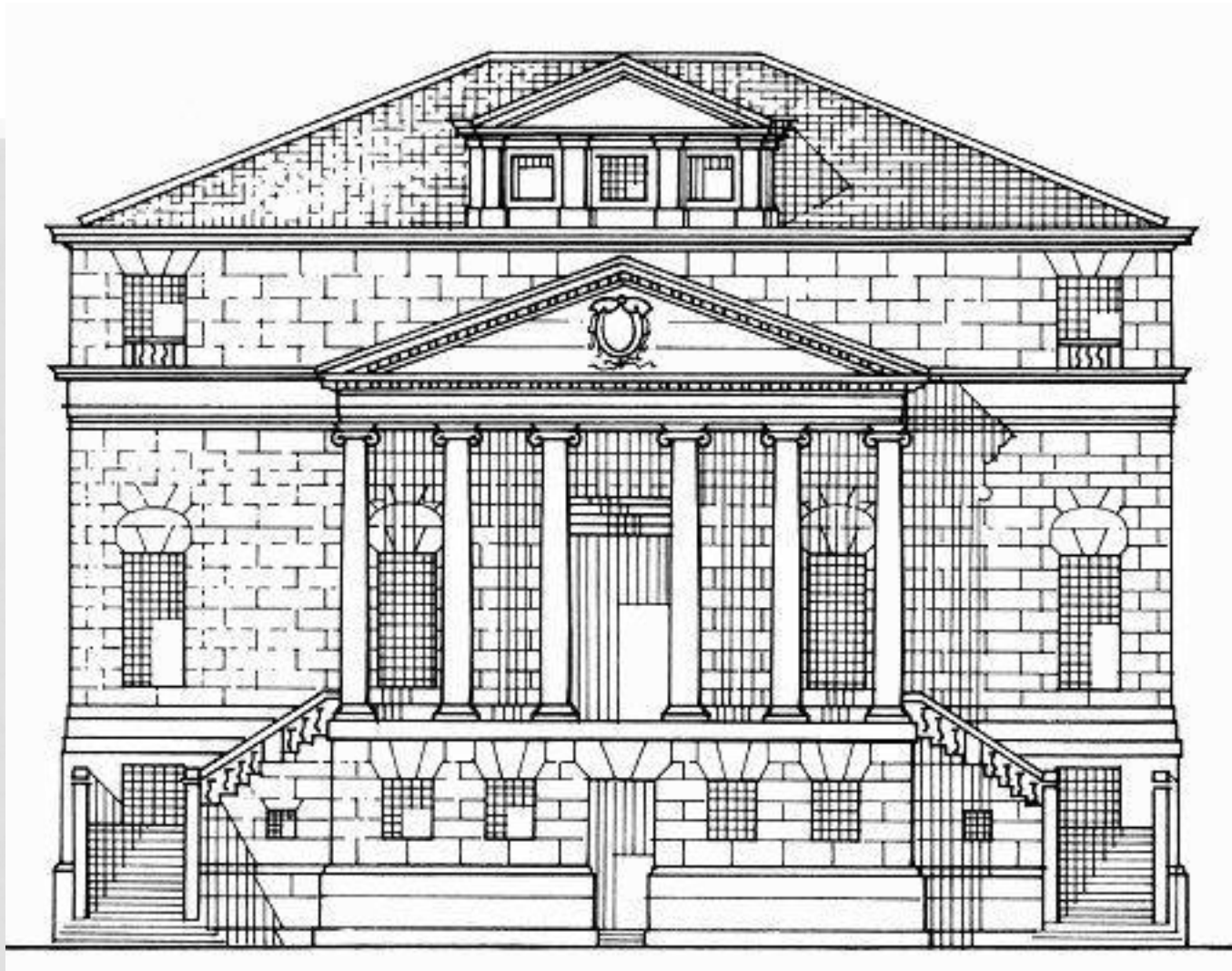




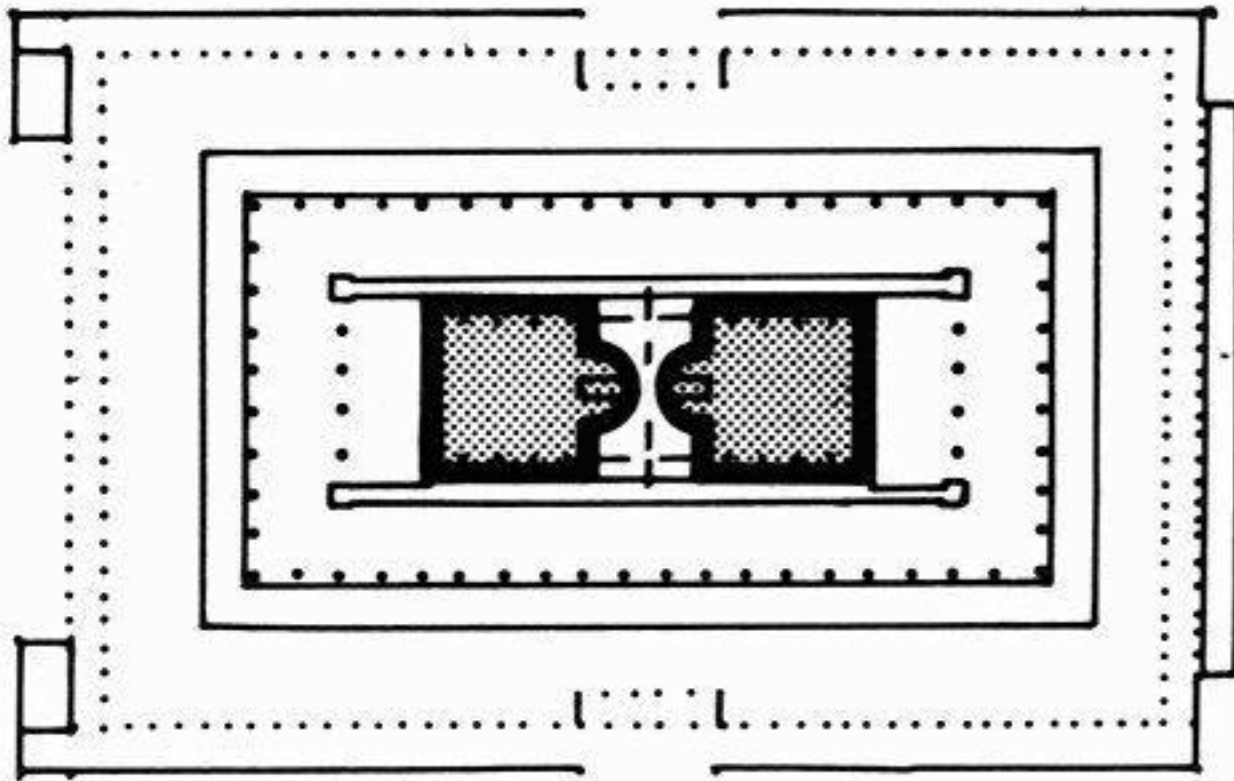
- Contoh potongan melintang dan membujur
- Potongan horisontal disebut denah
- Potongan vertikal disebut potongan

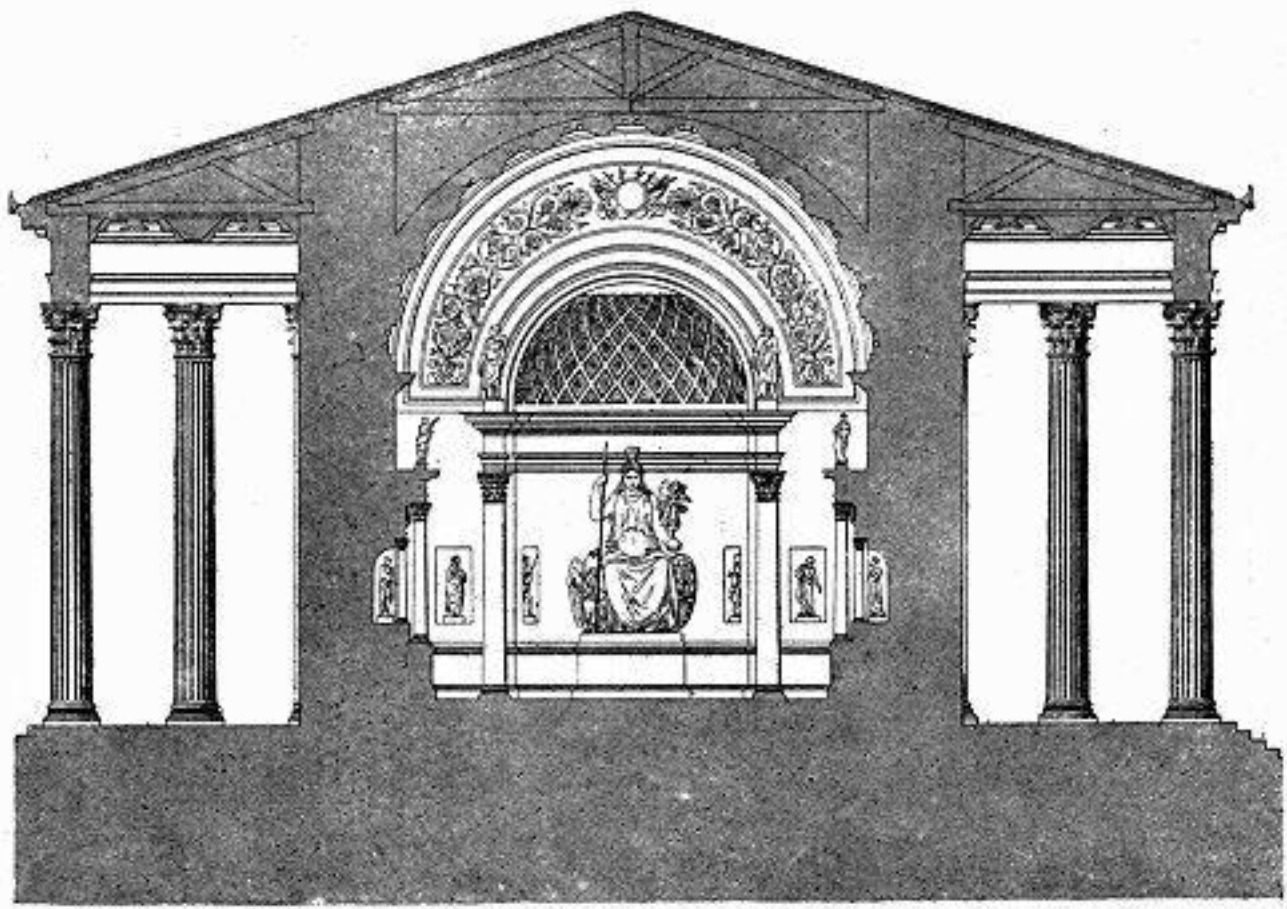
# FILLA FOSCARI





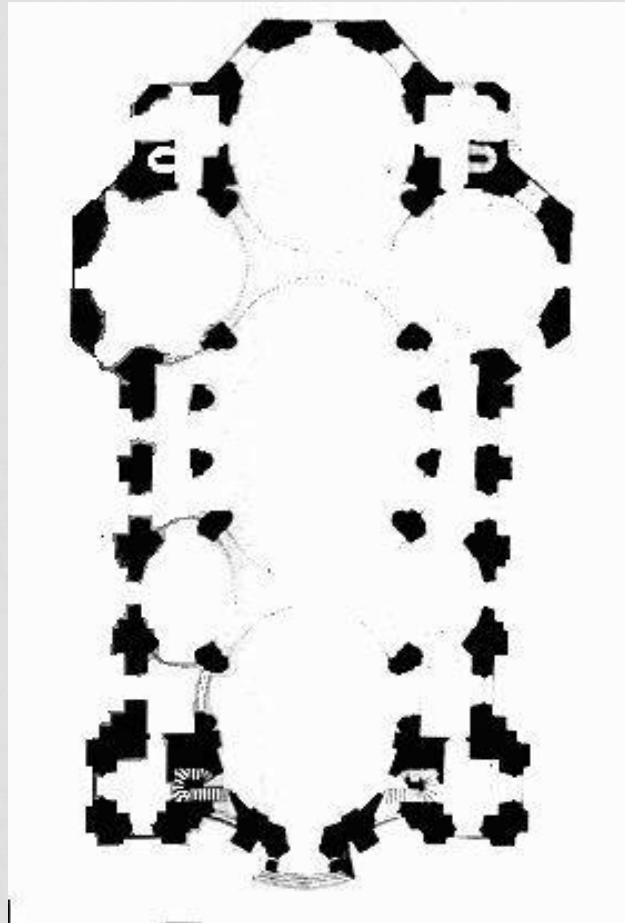
# VENUS AND ROME

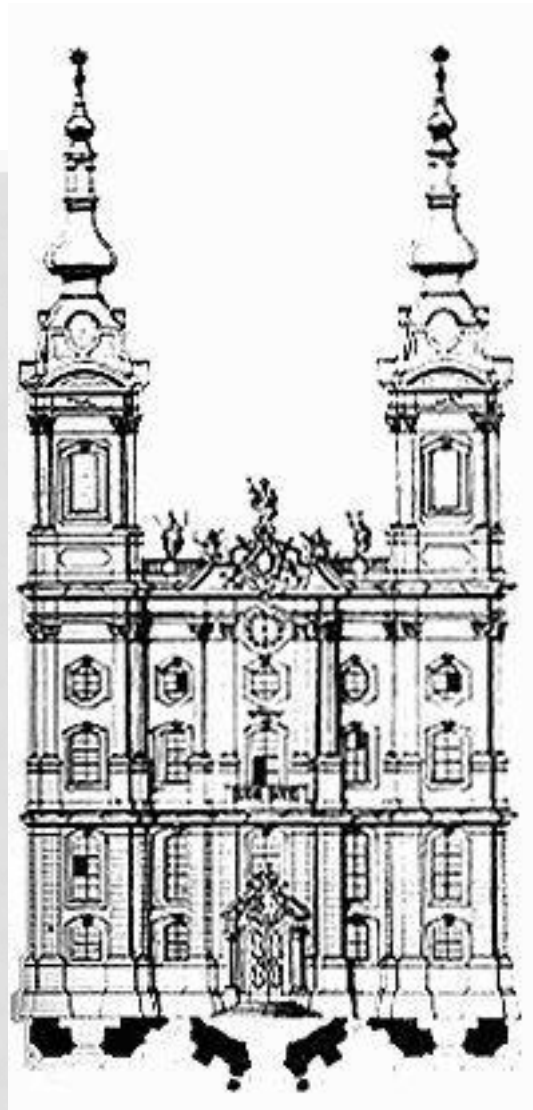




10 0 50 100 FEET.

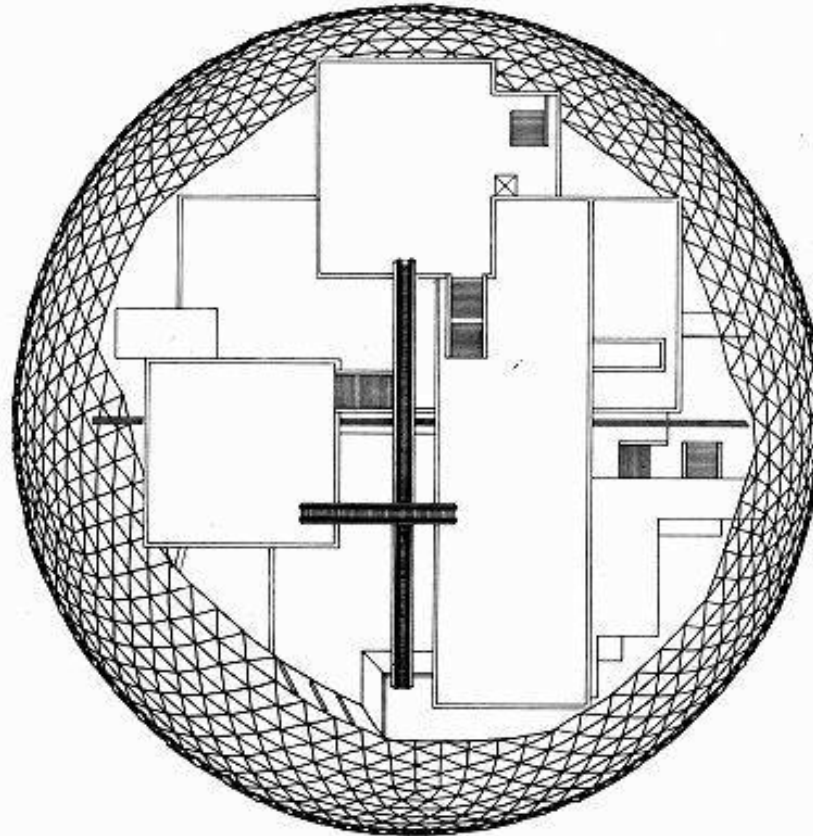
# VIERZEHNHEILIGEN

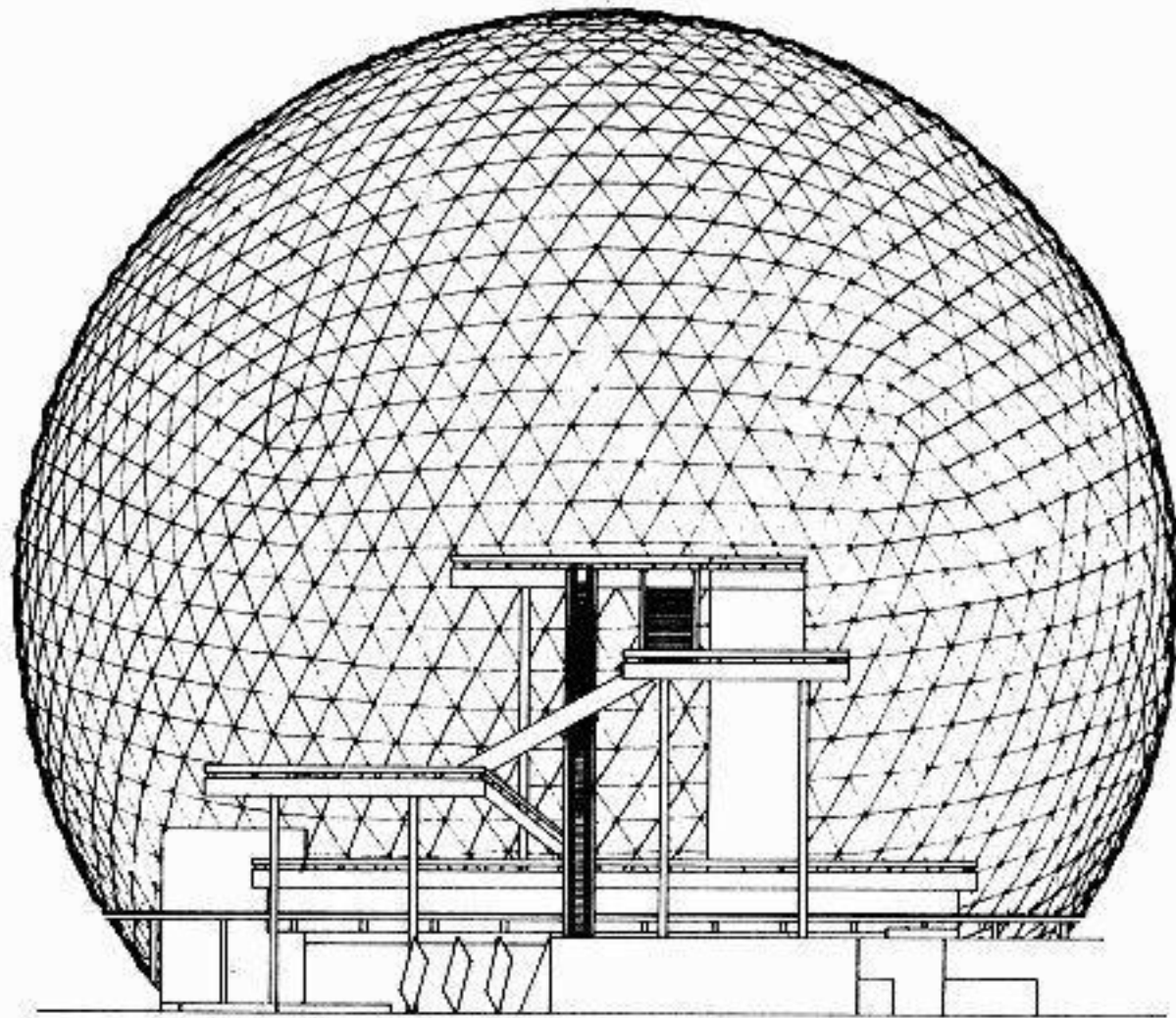




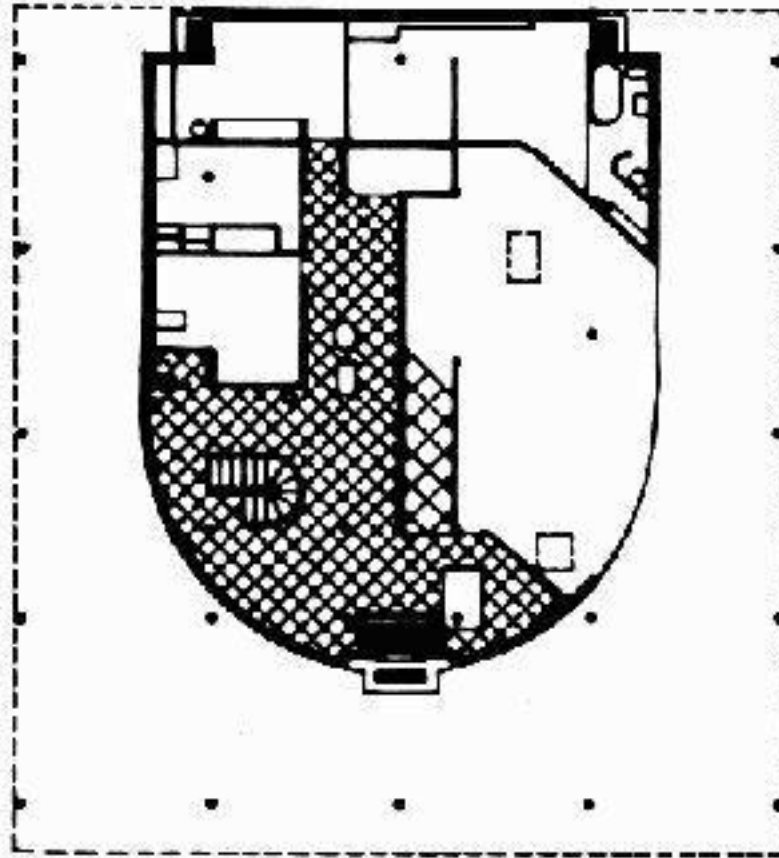


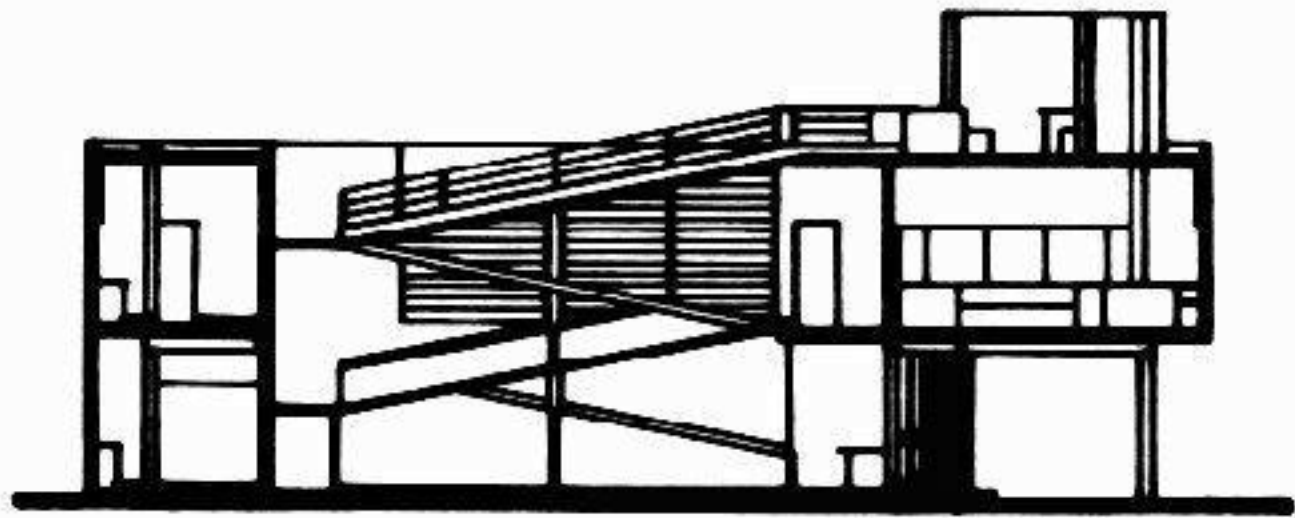
# US EXPO 67



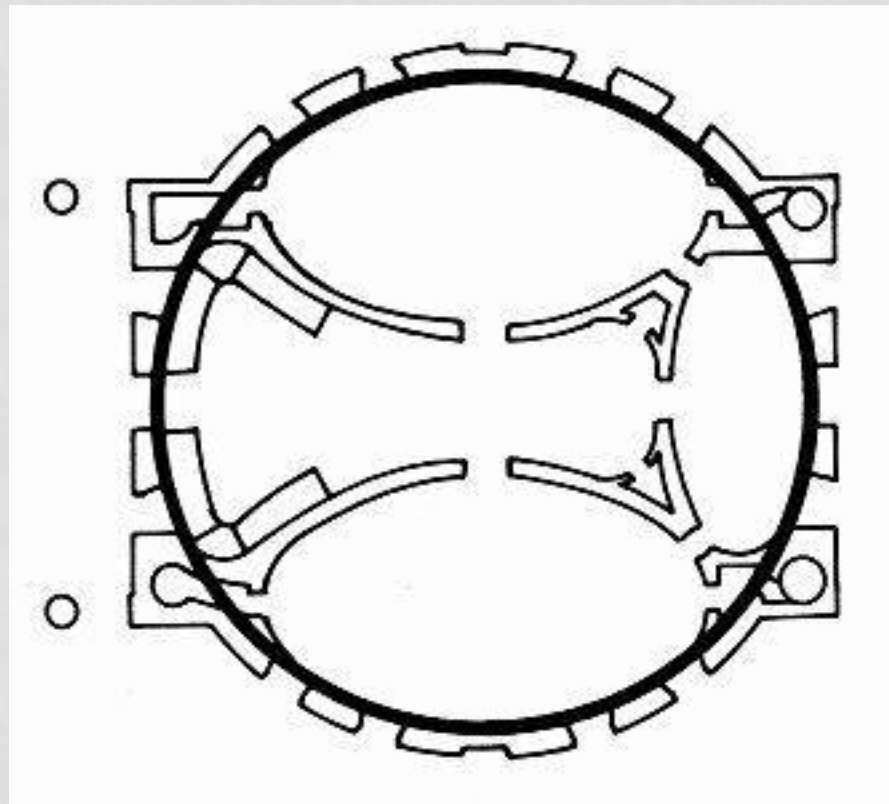


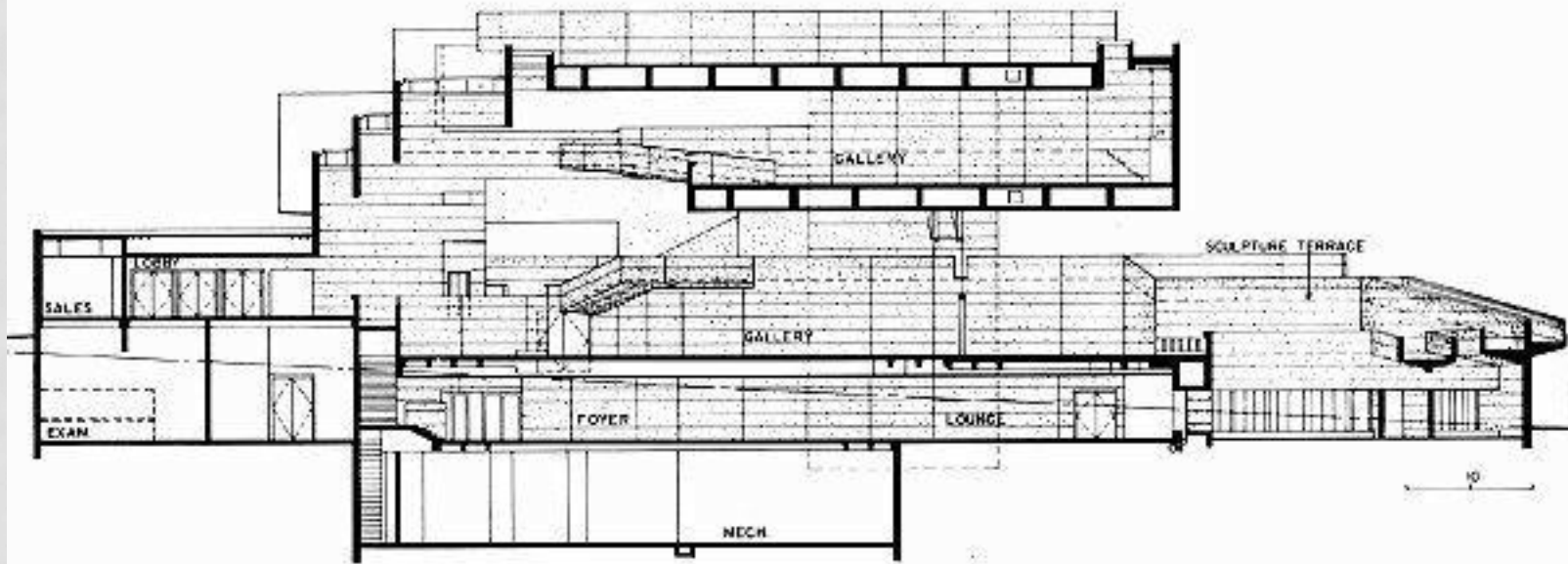
# VILLA SAVOYE





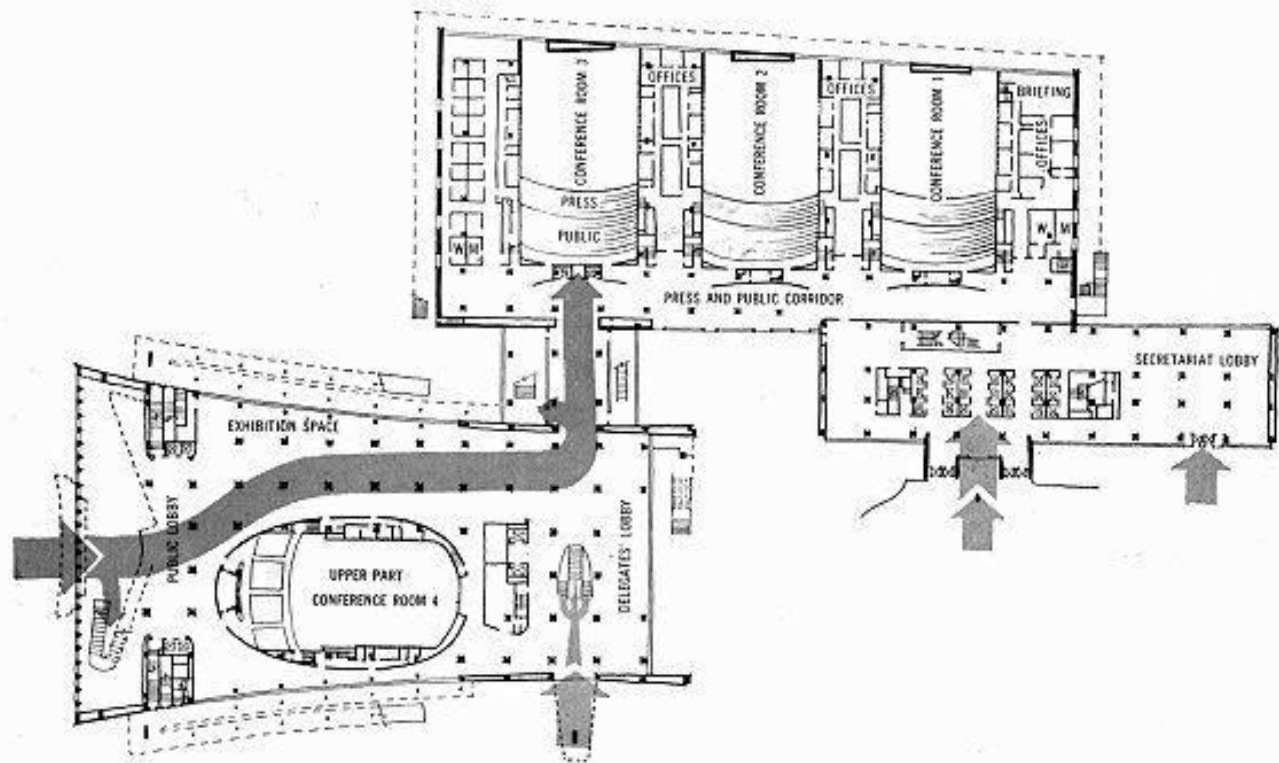
# UNIV OF VIRGINIA PLAN



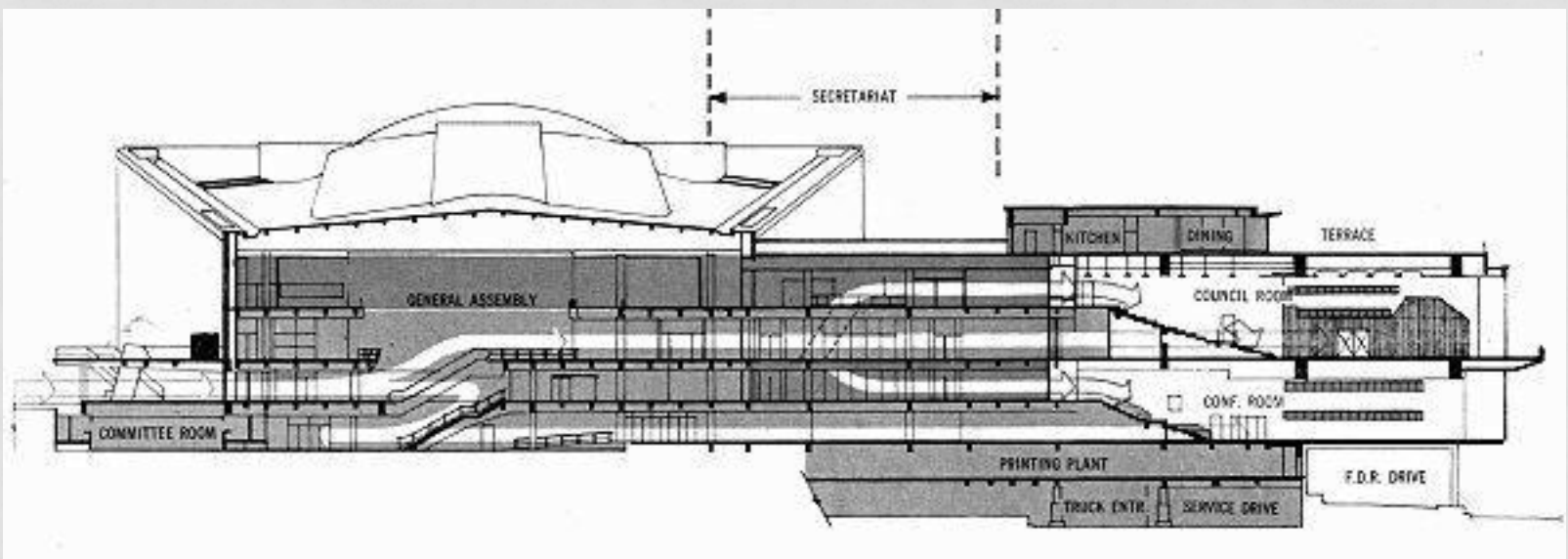




# UN HEAD QUARTERS







SAMPAI JUMPA