

# Regional Planning – Example from a Global Context

# Goal of Regional Planning in the Western Countries (Case of Germany, Austria, and Switzerland) (Berentsen, 1985)

## The reduction of regional inequalities

- Including equalization of the socioeconomic opportunities of individuals, is an avowed regional planning goal.

## Reducing rural-urban living standard differentials.

- seek an end to depopulation of rural areas, which is viewed as harmful to the socioeconomic prospects of these regions,

Implicit (occasionally explicit) in the stated goals of the Western nations is the desire to use national resources wisely to achieve optimal long-term economic growth

# Four major types of goal conflicts in regional development

(Berentsen, 1985)

---

- Problems in achieving both maximal national economic growth and regional equality especially between metropolitan and nonmetropolitan areas (the classic equity-efficiency tradeoff)
- Conflicts between achieving (or maintaining) strong economies in 'peripheral' areas and offering all people in these regions the best opportunities for improvement of personal socioeconomic well-being, regardless of their ultimate place of residence (the 'place versus people prosperity' issue)
- Conflict of sectorally and regionally based institutions (for example, ministries and states)
- Differing interests between federal and regional authorities (regionalism).

# Evaluation on Impact of Regional Planning

(Berentsen, 1985)

Impacts in the Western nations have usually been found to be relatively modest and of much less importance than free market forces, which as noted earlier have generally worked against regional planning goals.

Specifically, the process of world economic integration (esp. EU) generally favored concentration of economic growth in selected metropolitan regions to the detriment of 'peripheral' regions.

The importance of regional planning as a component of national planning has been accepted, and institutions which promote and undertake regional planning have become part of the institutional planning apparatus

# Regional Planning in Germany

# Administrative Unit

Federal

State

Districts and Urban District

Municipality/Komunitas (Gemeinde): group of villages or towns

# Regional Planning in Germany

(Mertin and Paal, nd)

The competence of regional planning is in the responsibility of the Federal States/Länder

The main instrument for territorial planning on the level of the “Länder”/State is the so-called “Landesentwicklungsplan” (“Regional Development Plan adopted by a Land”).

The “Regional Development Plan adopted by a Land/State” refers to the present economic, social, infrastructural and environmental situation as well as to the future aspired development.

# Federal States of Germany





# Regional Planning in Germany

(Mertin  
and Paal, nd)

The competence of regional planning in Germany: the Federal States.

States is the basis for “their” regional planning.

But there are huge disparities concerning scale, delimitation and organisation of planning regions

The planning regions feature different stages of development concerning the compilation of regional plans

So, in the system of German territorial planning **regional planning** has to be seen as the **regional level of country (state) planning** (SCHMITZ 2005 in Mertinand Paal, nd)

**Figure 2: Planning levels and instruments in Germany – an overview**

<b>Territorial unit</b>	<b>Instrument</b>	<b>Contents</b>	<b>Reference surface</b>	<b>Scale</b>
Federal Government	Federal Regional Planning Act Federal Planning Programme	Text of the law Publication (text) on the main spatial development of the federal territory	nation-wide nation-wide	- -
Country/Federal State/Land	Regional Development Plan adopted by a Land	Map(s) and explanations (text) concerning the main settlement structure, infrastructure and other important land use types	Land (area-wide)	1:200.000
Region	Regional Plan	Map(s) and explanations (text) with detailed statements on development axes, urban development etc.	Region (area-wide)	from 1:100.000 to 1:50.000 (depends on the size of the unit)
Municipality	Land development Plan legally-binding Land use Plan	Map(s) and explanations (text) on main land use categories Map (s) and explanations (text) on detailed building regulations	Municipality (area-wide) Parts of the municipality	1:10.000 from 1:1.000 to 1:500

Source: author's own design

(Picture is taken from Mertin and Paal, nd)

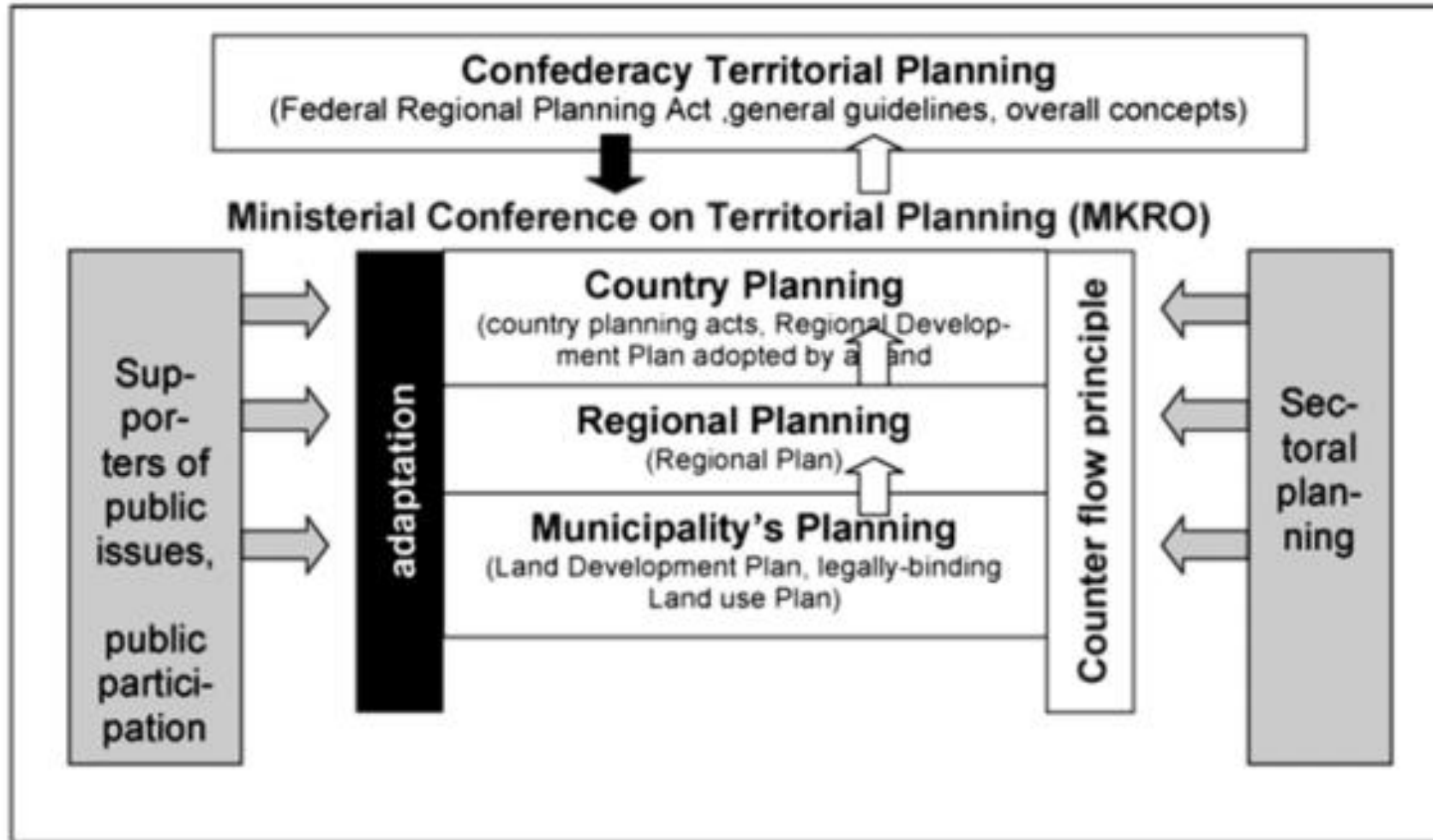
# The challenge of regional planning in Germany

(Mertin and Paal, nd)

Coordination between the Federal States and the communities (counter flow principle).

Integration of sectoral planning (e.g. national highways, landscape planning) in the regional plans under consideration of different interests

**Figure 1:** Organisation and instruments of territorial planning in Germany



Source: BBR 2000

(Picture is taken from  
Mertin and Paal, nd)

# Instrument of Regional Planning (Mertin and Paal, nd)

---



The most important instrument of regional planning is the Regional Plan



Its main objective is concerning the structure of **urban development** and **economic structure** within a planning region.



This process of development is mainly defined by predetermined factors, e.g. physio-geographical parameters, location conditions, infrastructure, structure of population, economic force

# Federal States of Germany

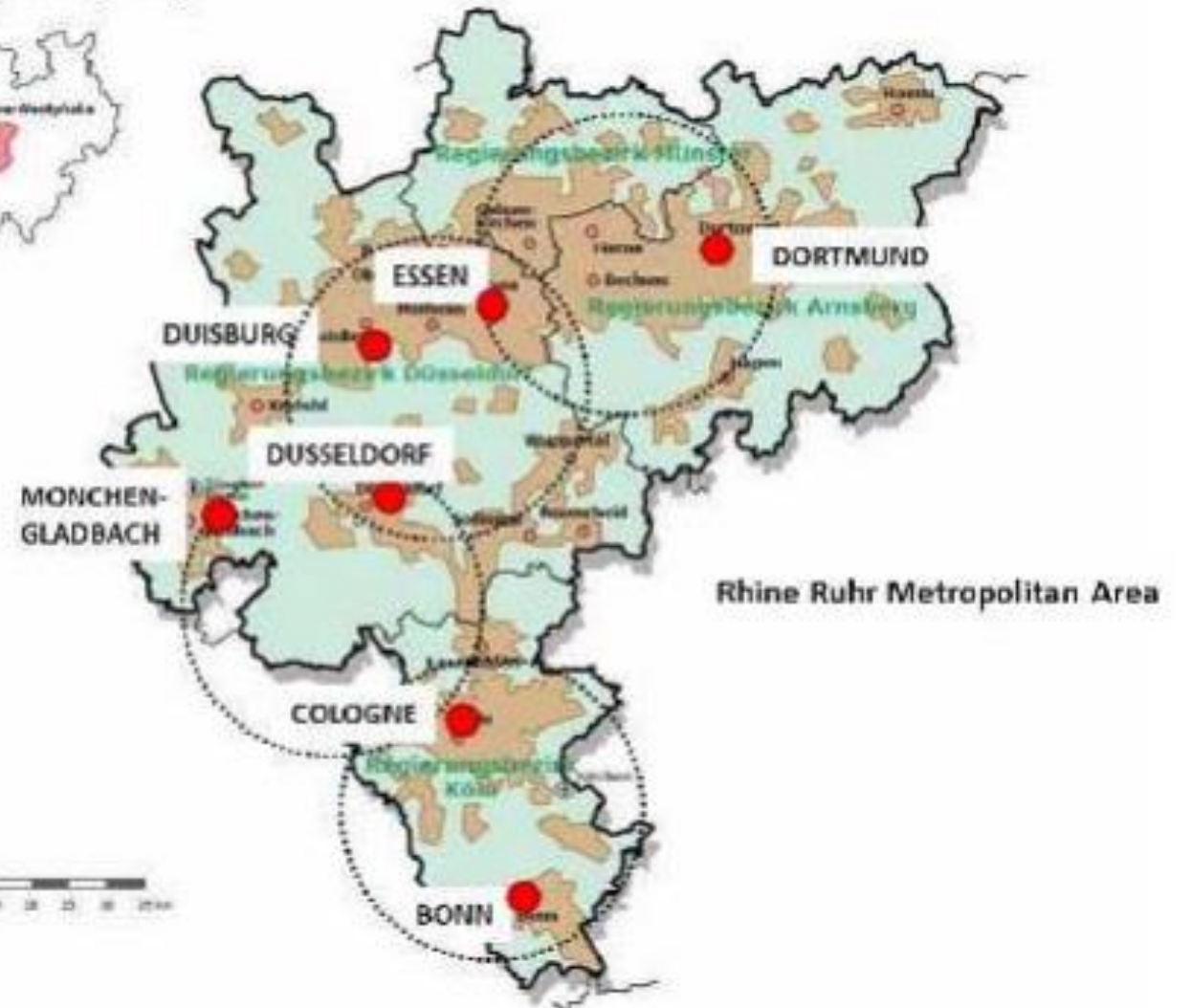


<https://www.mappr.co/political-maps/germany-states-map/>

# Ruhr-Rhine Region

- Source: Kesar, 2016

ine Westphalia (NRW)



# Rhine-Ruhr Region

- Three Metropolitan Regions
- Has a historical context as industrial cluster in Germany
- The largest GDP in Germany, the third among EU member, the 16<sup>th</sup> largest GDP in the world
- Specialization in finance/high tech, insurance, multimedia services-tertiary sectors
- **Dusseldorf and Cologne** the largest economic center of the Region, followed by **Dortmund Bonn and Essen**
- Home for 12 Fortune Global 500 companies (Deutsche Telekom, Thyssen Krupp, etc)





# Rhine-Ruhr Region

- Has **two international airports** (Dusseldorf and Cologne), several regional airports (Monchen gladbag, Dortmund, etc)
- Major cities (Dusseldorf) connected with Frankfurt with **highspeed railroad**, and the **rail network in the federal state is the busiest networks**
- Dortmund and Duisburg Port are **large industrial ports**





# The Ruhr Region

# Ruhr Metro Region

---

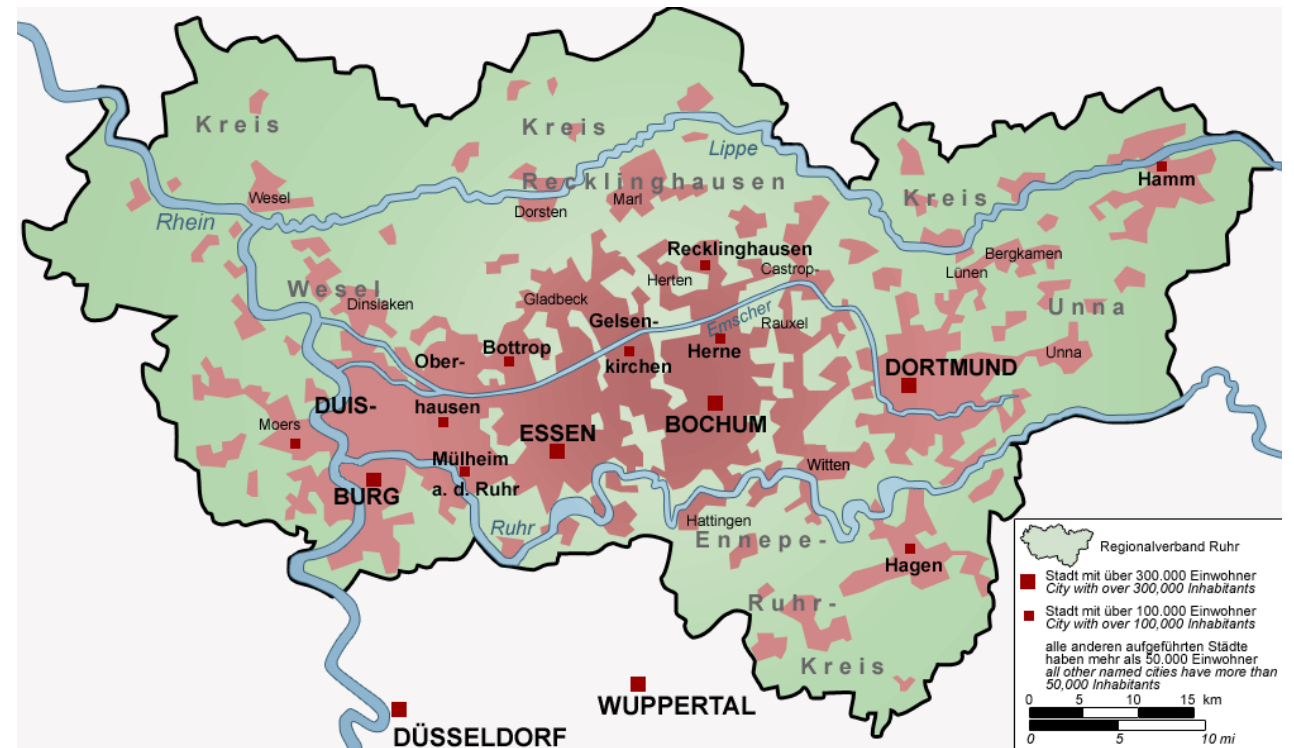
- The Ruhr region is the largest urban agglomeration in Germany.
- More than 4000 km<sup>2</sup> and a population of about five million. The Ruhr region is considered part of the larger Rhine-Ruhr metropolitan area of more than 11 million people (Blotevogel, 1998)



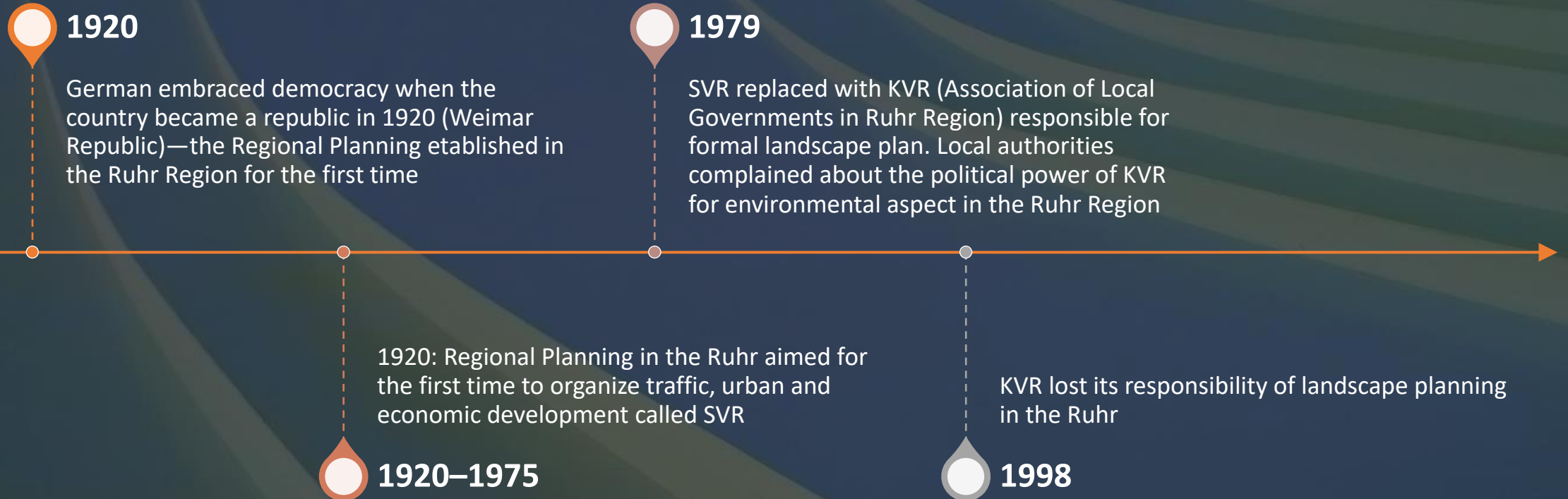
## Ruhr Metropolitan Region

[https://en.wikipedia.org/wiki/Ruhr#/media/File:Ruhr\\_area-map.png](https://en.wikipedia.org/wiki/Ruhr#/media/File:Ruhr_area-map.png)

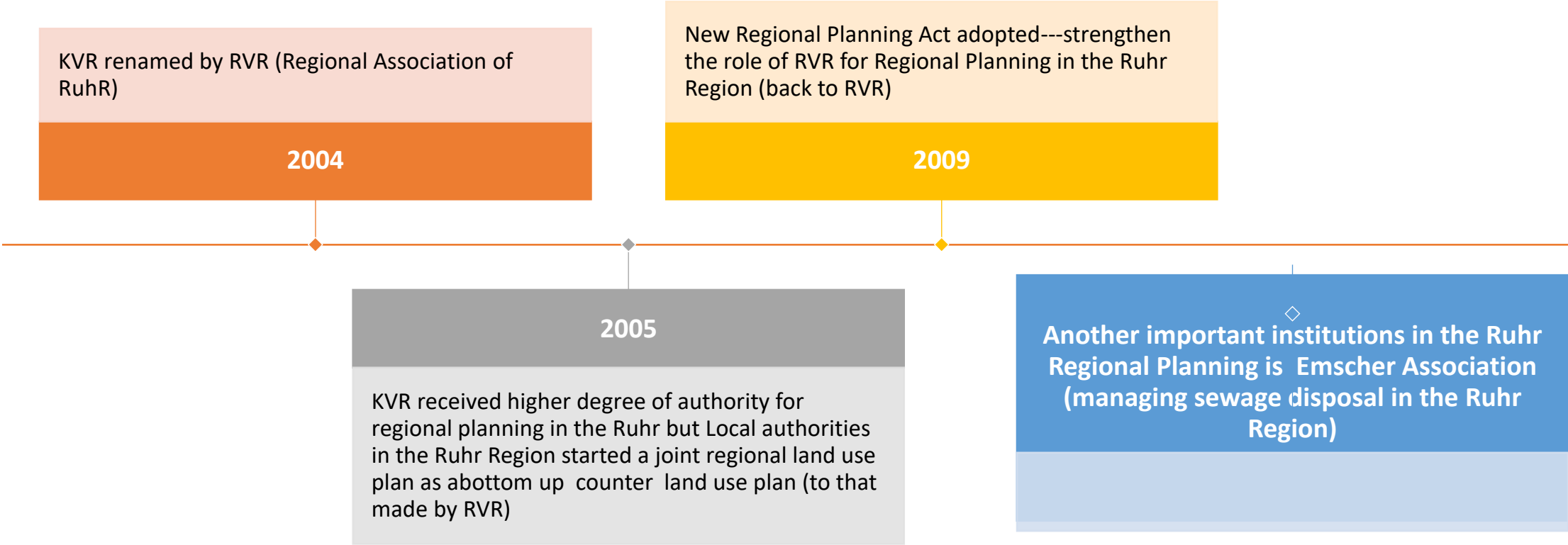
- Ruhr Region was an industrial zone. Used to have 300 coal mines in and around the central cities of Duisburg, Essen, Bochum and Dortmund (1800s).
- Railway connected the mines cities---urbanization boosted---agriculture declined—population increased.
- Emscher Association established in 1898 to manage sewage disposal in the Ruhr region



# The History of Regional Planning in the Ruhr Region



# The History of Regional Planning in the Ruhr Region



# The Ruhr Region

Consists of 17 cities

Formal regional planning instruments (regional plan) in the Ruhr used to have low influence and mostly cause conflict among different authorities

But the combination of informal planning instruments like many environmental projects changed the paradigm of regional planning in the Ruhr region

# The IBA Emscher Park (Gruehen, 2017)

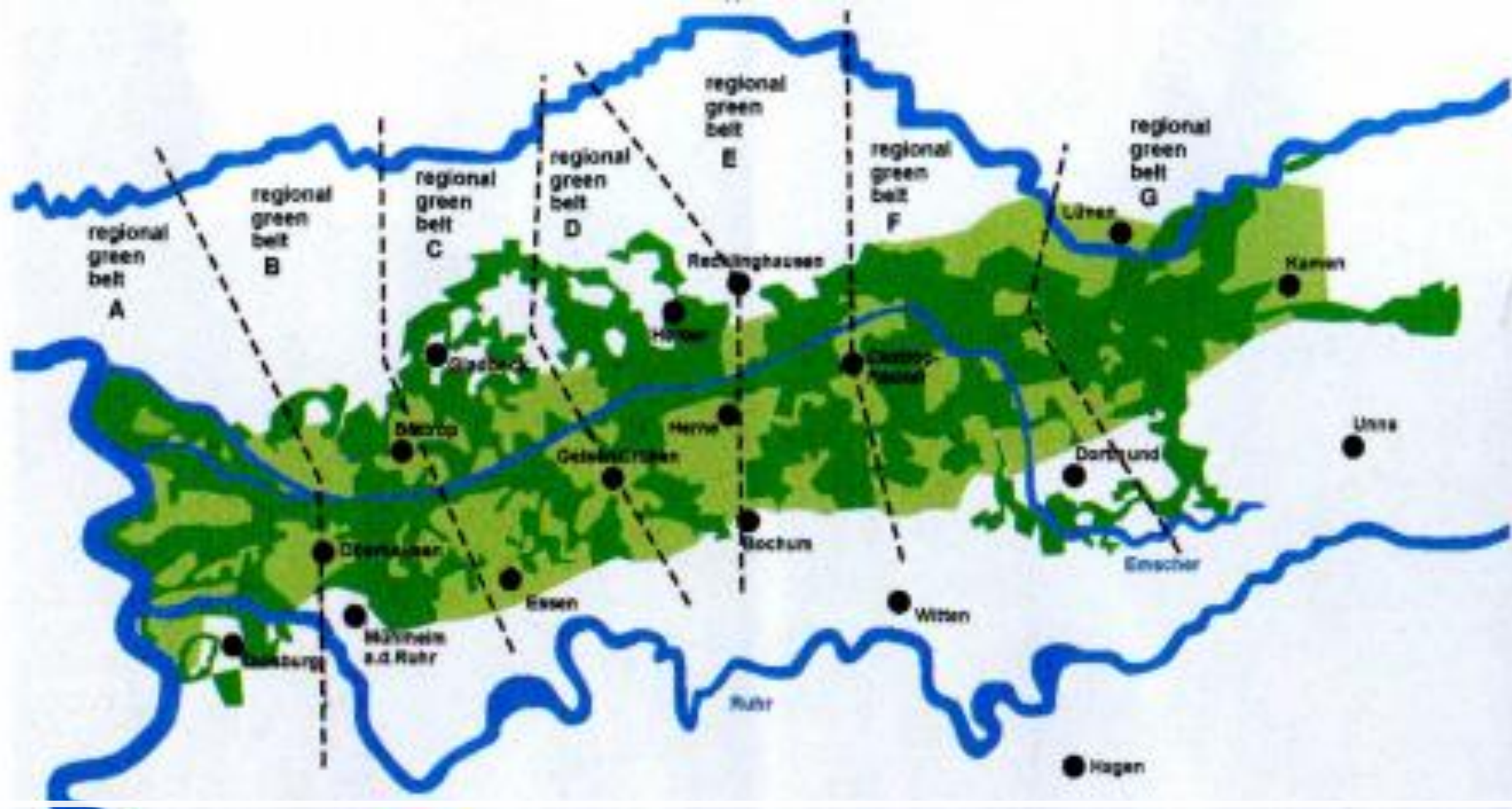
IBA Emscher Park (20 years) by the federal state that working together with 17 cities/local governments and RVR, started 1989 to 2009

Main goal to improve quality of life of communities change the industrial cities with urban design and ecology programs. Consists of 120 projects of 2.5 million euro funding

Revitalization of Emsche River, Historic Monuments, Urban Development Projects that Greening the Region

The project is now seen as a starting point for a huge number of single projects that have been carried out by many local governments in cooperation with regional authorities currently





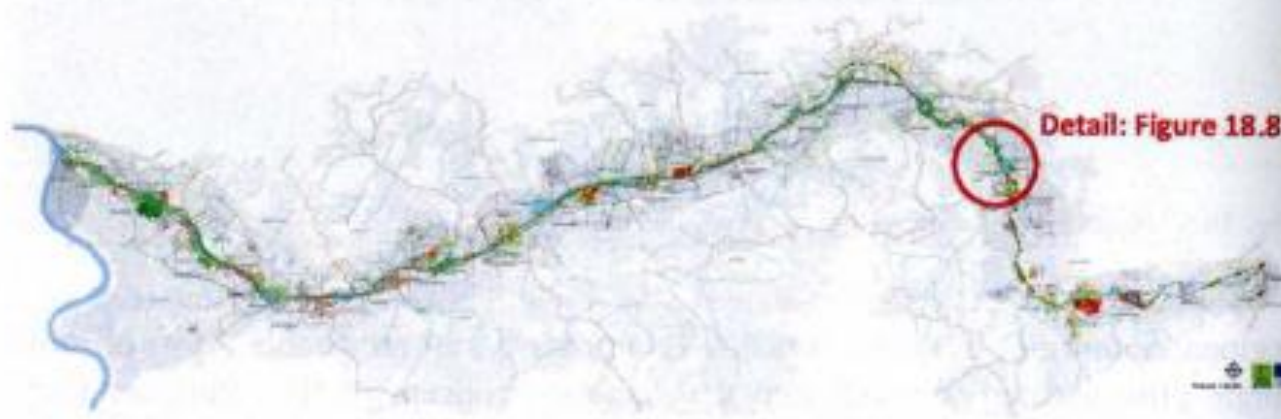
## IBA Emscher Park Project

- IBA Emscher Park
- Emscher Landscape Park

Picture is taken from : Gruehen (2017)



**Fig. 18.6** Master Plan of Emscher Landscape Park 2010 (Projekt Ruhr GmbH 2005)



**Fig. 18.7** Master Plan of Future Emscher—The New Emscher Valley (Emschergenossenschaft 2006)